

Report Sito 2024

General Statistics

Summary

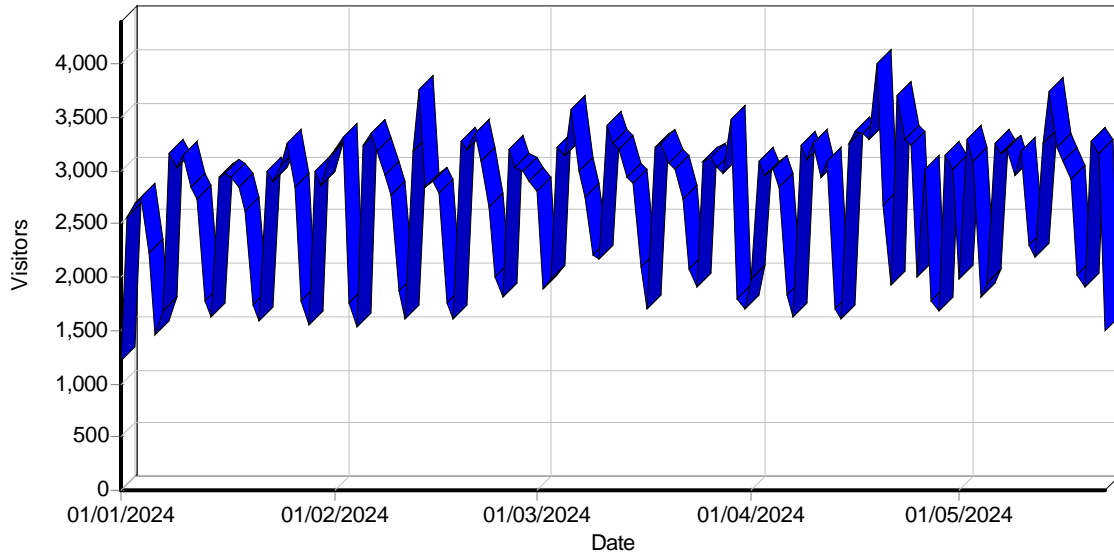
Summary

Hits	
Total Hits	11,986,979
Visitor Hits	11,381,158
Spider Hits	605,821
Average Hits per Day	83,825
Average Hits per Visitor	29.56
Cached Requests	265,386
Failed Requests	1,261,800
Page Views	
Total Page Views	1,467,927
Average Page Views per Day	10,265
Average Page Views per Visitor	3.81
Visitors	
Total Visitors	385,056
Average Visitors per Day	2,692
Total Unique IPs	215,013
Bandwidth	
Total Bandwidth	0 B
Visitor Bandwidth	0 B
Spider Bandwidth	0 B
Average Bandwidth per Day	0 B
Average Bandwidth per Hit	0 B
Average Bandwidth per Visitor	0 B

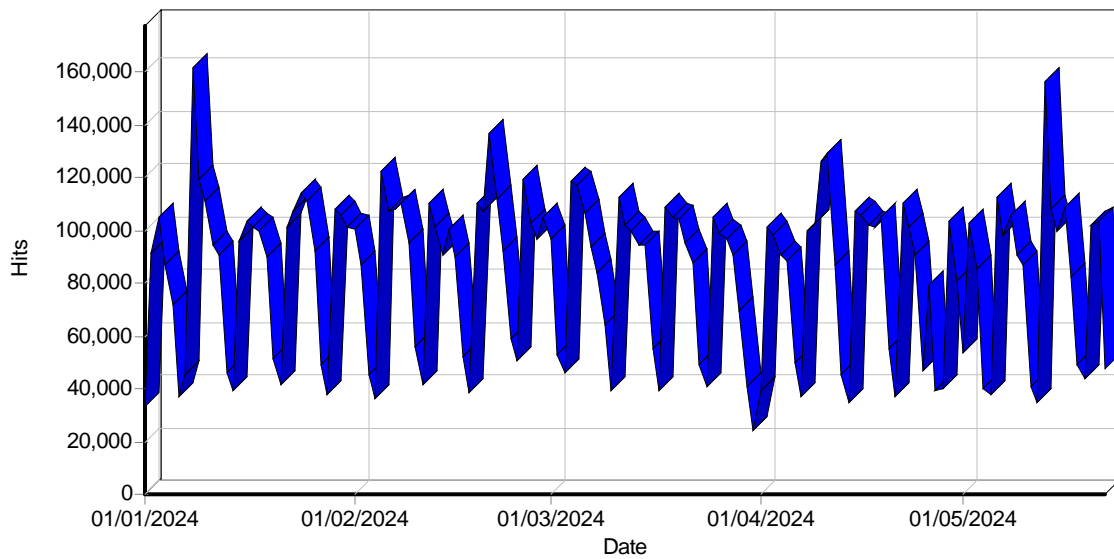
Activity Statistics

Daily

Daily Visitors

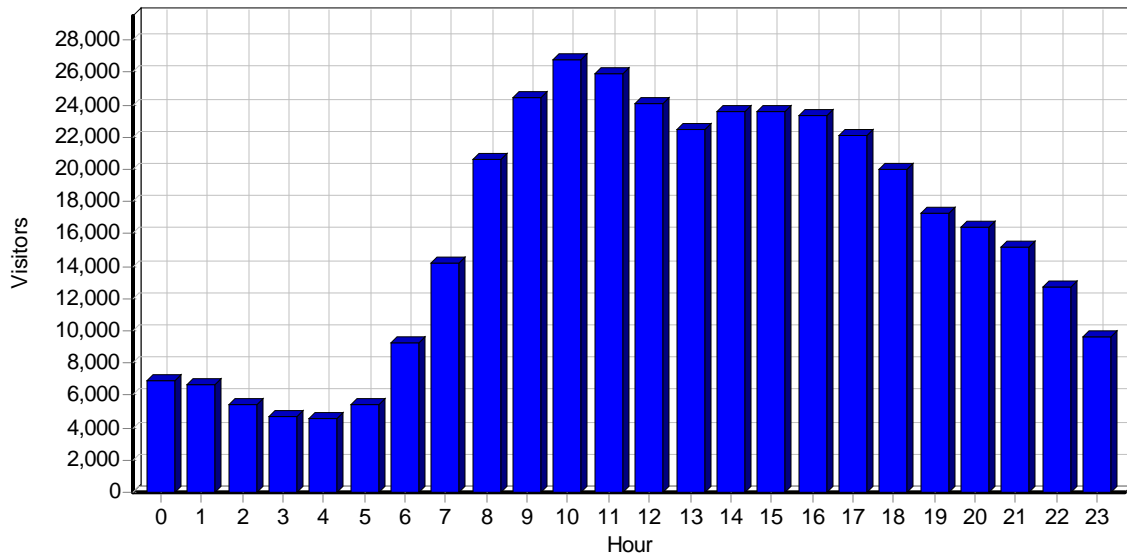


Daily Hits



By Hour of Day

Activity by Hour of Day



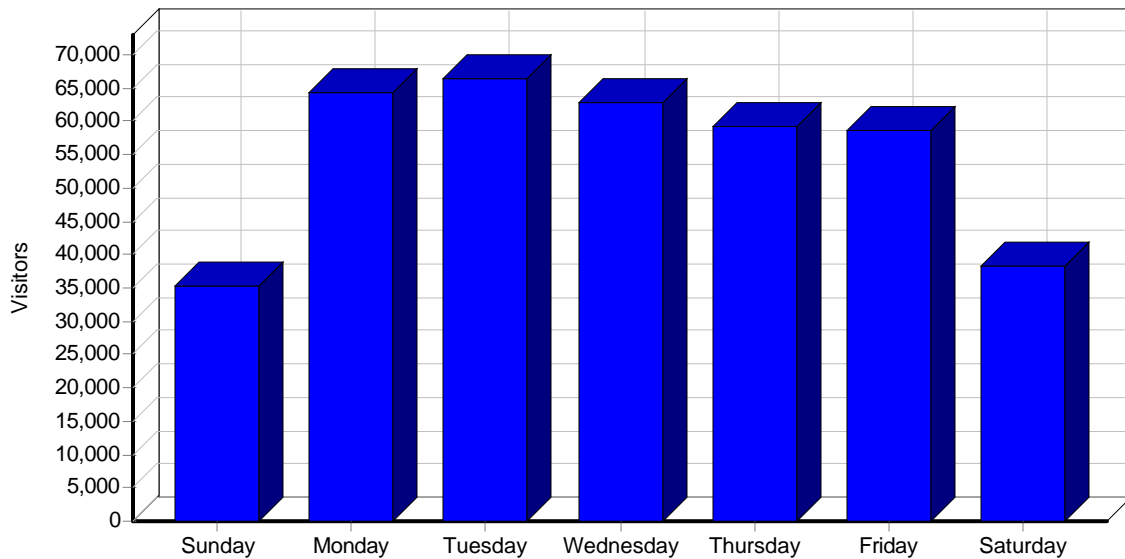
Activity by Hour of Day

Hour	Hits	Page Views	Visitors	Bandwidth (KB)
00:00 - 00:59	188,014	32,354	6,888	0
01:00 - 01:59	98,565	15,304	6,671	0
02:00 - 02:59	87,910	20,022	5,398	0
03:00 - 03:59	80,915	17,280	4,693	0
04:00 - 04:59	80,294	14,521	4,529	0
05:00 - 05:59	107,633	18,290	5,457	0

06:00 - 06:59	200,883	26,732	9,269	0
07:00 - 07:59	424,710	50,002	14,189	0
08:00 - 08:59	807,559	129,480	20,647	0
09:00 - 09:59	947,549	103,264	24,421	0
10:00 - 10:59	985,638	103,293	26,813	0
11:00 - 11:59	996,413	115,080	25,946	0
12:00 - 12:59	890,572	101,888	24,027	0
13:00 - 13:59	790,840	90,497	22,443	0
14:00 - 14:59	779,634	88,459	23,621	0
15:00 - 15:59	754,259	81,595	23,589	0
16:00 - 16:59	709,925	76,112	23,308	0
17:00 - 17:59	649,529	76,459	22,049	0
18:00 - 18:59	558,257	76,950	19,935	0
19:00 - 19:59	478,444	62,210	17,291	0
20:00 - 20:59	429,036	53,384	16,431	0
21:00 - 21:59	402,403	48,669	15,123	0
22:00 - 22:59	314,711	35,128	12,723	0
23:00 - 23:59	223,286	30,954	9,595	0
Total	11,986,979	1,467,927	385,056	0

By Day of Week

Activity by Day of Week

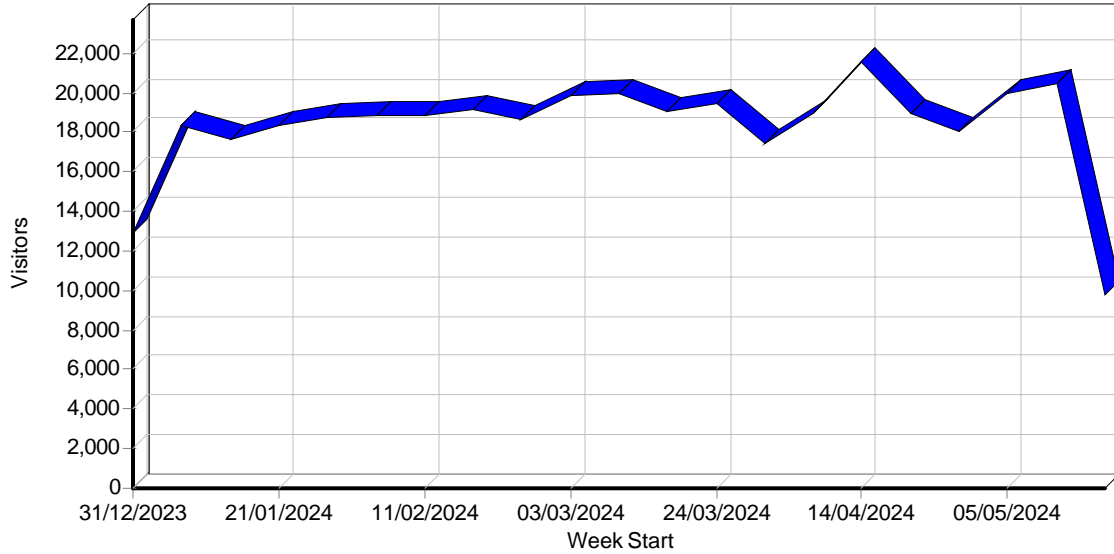


Activity by Day of Week

Day	Hits	Page Views	Visitors	Bandwidth (KB)
Sunday	785,916	89,511	35,379	0
Monday	2,239,835	318,628	64,214	0
Tuesday	2,170,302	243,203	66,352	0
Wednesday	2,095,427	251,947	62,881	0
Thursday	1,964,716	256,536	59,182	0
Friday	1,755,274	195,498	58,714	0
Saturday	975,509	112,604	38,334	0
Total	11,986,979	1,467,927	385,056	0

By Week

Activity by Week

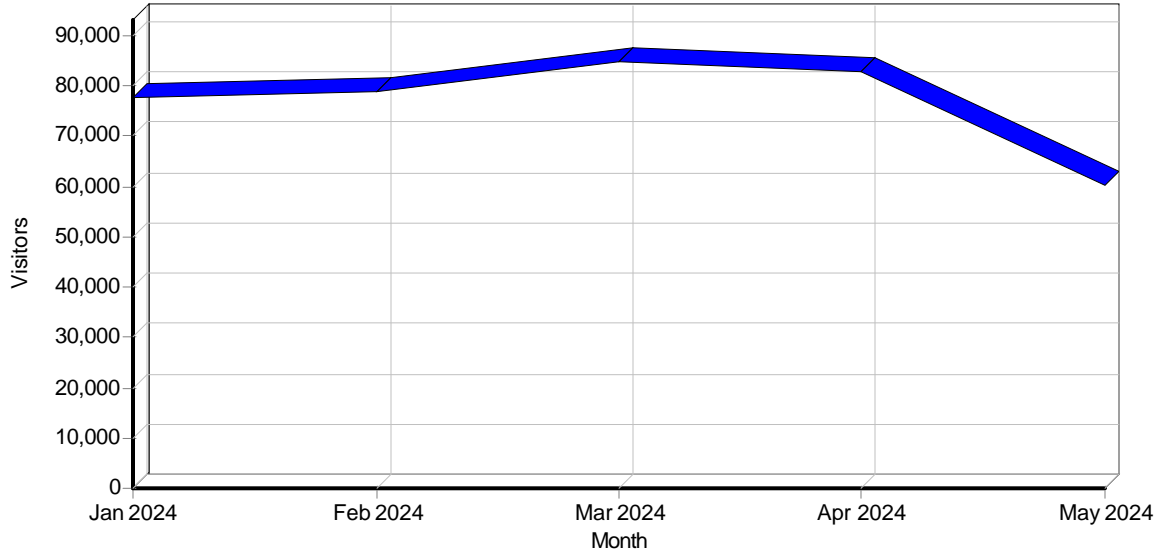


Activity by Week

Week	Hits	Page Views	Visitors	Bandwidth (KB)
31/12/2023 - 06/01/2024	425,512	43,609	12,917	0
07/01/2024 - 13/01/2024	668,181	122,070	18,386	0
14/01/2024 - 20/01/2024	580,962	60,708	17,677	0
21/01/2024 - 27/01/2024	615,576	68,236	18,391	0
28/01/2024 - 03/02/2024	584,756	71,410	18,776	0
04/02/2024 - 10/02/2024	636,284	84,848	18,866	0
11/02/2024 - 17/02/2024	587,265	64,707	18,836	0
18/02/2024 - 24/02/2024	656,515	71,898	19,183	0
25/02/2024 - 02/03/2024	624,180	69,477	18,617	0
03/03/2024 - 09/03/2024	629,818	73,700	19,847	0
10/03/2024 - 16/03/2024	597,265	70,605	19,960	0
17/03/2024 - 23/03/2024	588,031	71,424	19,074	0
24/03/2024 - 30/03/2024	542,317	69,799	19,411	0
31/03/2024 - 06/04/2024	492,544	53,519	17,407	0
07/04/2024 - 13/04/2024	627,588	100,574	18,957	0
14/04/2024 - 20/04/2024	610,614	60,710	21,531	0
21/04/2024 - 27/04/2024	504,387	52,075	18,938	0
28/04/2024 - 04/05/2024	506,731	58,337	18,039	0
05/05/2024 - 11/05/2024	572,268	56,380	19,980	0
12/05/2024 - 18/05/2024	638,985	110,569	20,440	0
19/05/2024 - 25/05/2024	297,200	33,272	9,823	0
Total	11,986,979	1,467,927	385,056	0

By Month

Activity by Month



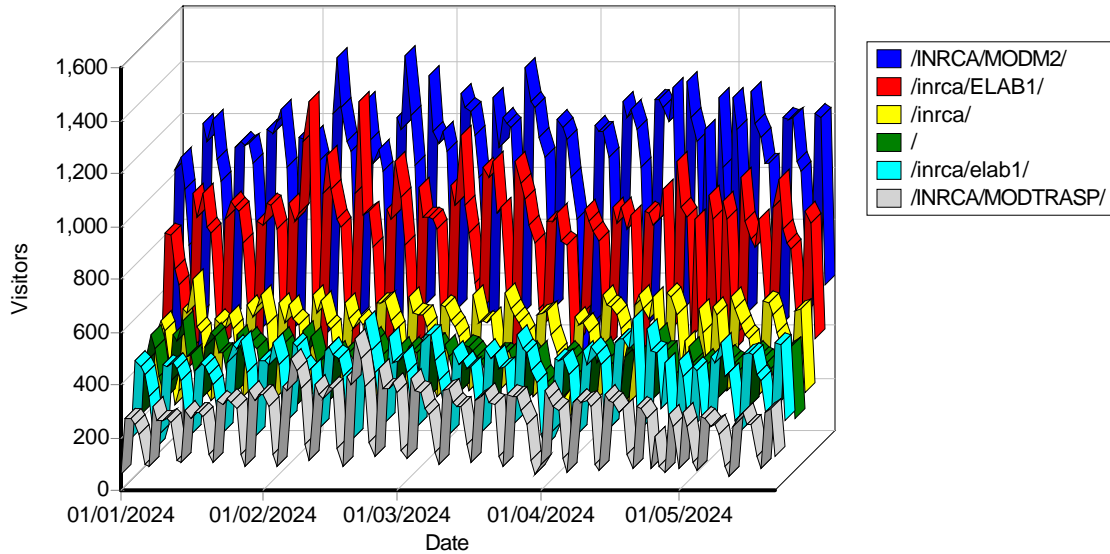
Activity by Month

Month	Hits	Page Views	Visitors	Bandwidth (KB)
Jan 2024	2,642,207	339,697	77,882	0
Feb 2024	2,587,585	302,237	79,074	0
Mar 2024	2,531,293	303,566	84,687	0
Apr 2024	2,435,171	287,303	82,979	0
May 2024	1,790,723	235,124	60,434	0
Total	11,986,979	1,467,927	385,056	0

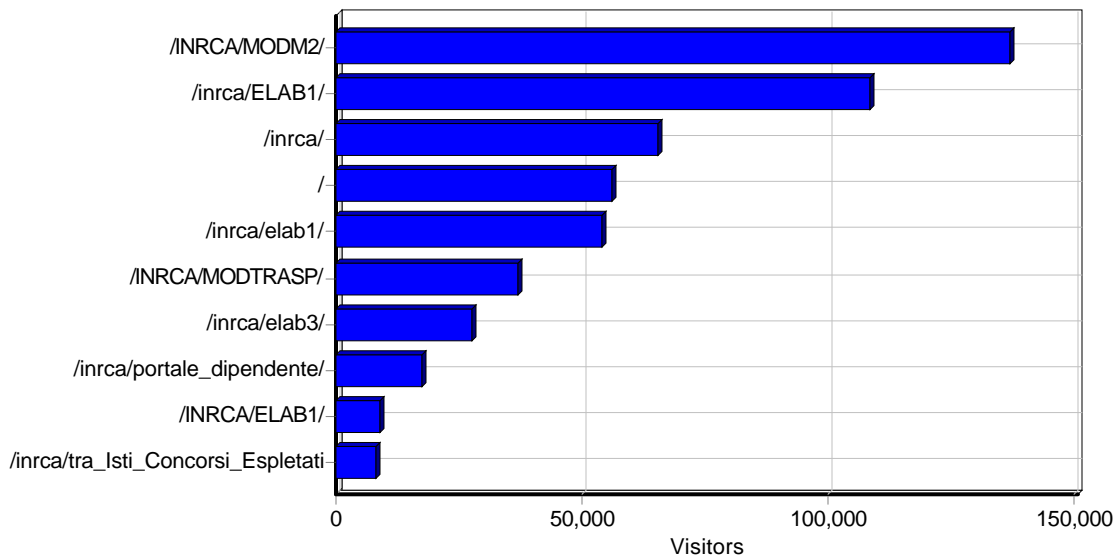
Access Statistics

Pages

Daily Page Access



Most Popular Pages

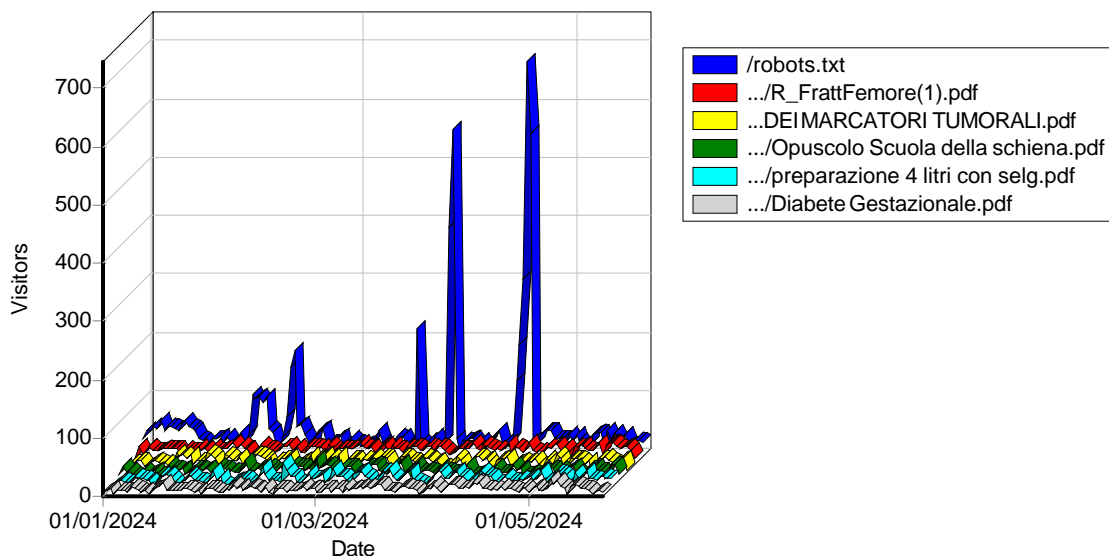


Most Popular Pages

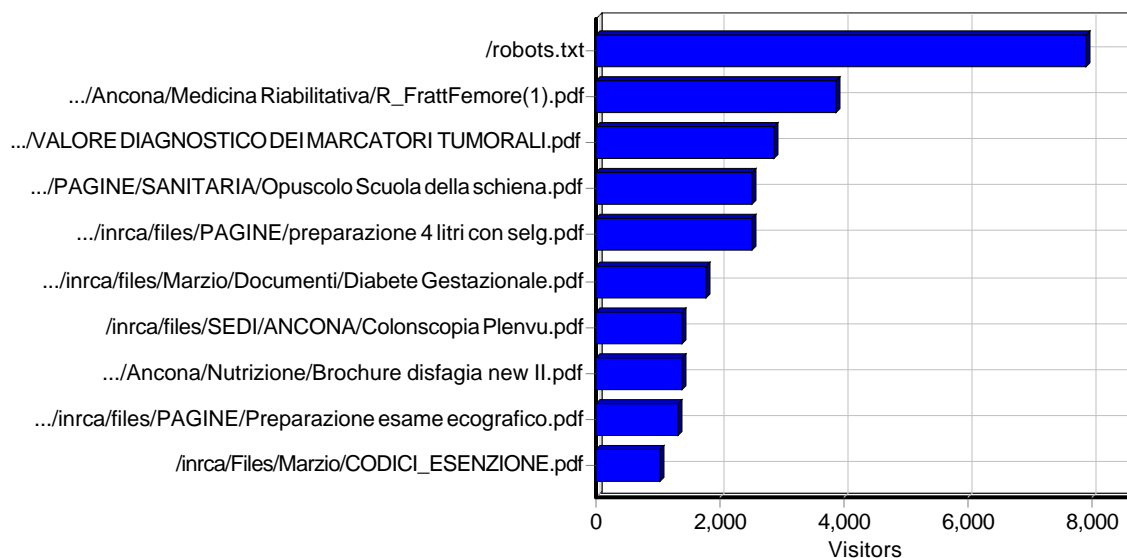
	Page	Hits	Incomplete Requests	Visitors	Bandwidth (KB)
1	http://www.inrca.it/INRCA/MODM2/	282,097	0	137,239	0
2	http://www.inrca.it/inrca/ELAB1/	245,135	0	108,770	0
3	http://www.inrca.it/inrca/	107,955	0	65,480	0
4	http://www.inrca.it/	83,395	188	56,324	0
5	http://www.inrca.it/inrca/elab1/	103,009	0	54,292	0
6	http://www.inrca.it/INRCA/MODTRASP/	72,117	0	37,206	0
7	http://www.inrca.it/inrca/elab3/	44,949	0	27,816	0
8	http://www.inrca.it/inrca/portale_dipendente	26,504	0	17,654	0
9	http://www.inrca.it/INRCA/ELAB1/	10,843	0	8,960	0
10	http://www.inrca.it/inrca/tra_Isti_Concorsi_EspletatiX	9,231	0	8,049	0

11	http://www.inrca.it/inrca/ELAB3/	6,762	0	5,383	0
12	http://www.inrca.it/inrca/home	5,649	0	2,926	0
13	http://www.inrca.it/inrca/elab7/	5,848	0	2,803	0
14	http://www.inrca.it/INRCA/MODTRASPBA/	6,476	0	2,732	0
15	http://www.inrca.it/inrca/POP_Medico	4,800	0	2,189	0
16	http://www.inrca.it/INRCA/home	2,530	0	1,698	0
17	http://www.inrca.it/wp-login.php	1,258	0	1,246	0
18	http://www.inrca.it/INRCA/pretorio_incl2	37,992	0	961	0
19	http://www.inrca.it/inrca/Ric_Isti_Gare	1,044	0	897	0
20	http://www.inrca.it/xmlrpc.php	832	0	816	0
21	http://www.inrca.it/inrca/MODSHARE/	5,895	0	757	0
22	http://www.inrca.it/inrca/elab6/	1,030	0	740	0
23	http://www.inrca.it/INRCA/MODM5/	2,927	0	732	0
24	http://www.inrca.it/inrca/ELAB5/	2,333	0	728	0
25	http://www.inrca.it/INRCA/elab1/	821	0	701	0
26	http://www.inrca.it/INRCA/POPUP_GareNE	1,350	0	690	0
27	http://www.inrca.it/inrca/advantage/focuson	652	0	639	0
28	http://www.inrca.it/zz/	4,514	0	580	0
29	http://www.inrca.it/INRCA/MODM4/	2,764	0	554	0
30	http://www.inrca.it/inrca/Ric_Isti_Pretorio	575	0	518	0
31	http://www.inrca.it/INRCA/elab4/	2,860	0	498	0
32	http://www.inrca.it/inrca/elab4/	2,780	0	480	0
33	http://www.inrca.it/inrca/Ric_Isti_Posizioni	722	0	439	0
34	http://www.inrca.it/INRCA/MODM3/	1,735	0	434	0
35	http://www.inrca.it/inrca/Elab3/	547	0	418	0
36	http://www.inrca.it/inrca/Home	521	0	416	0
37	http://www.inrca.it/admin.php	404	0	357	0
38	http://www.inrca.it/INRCA/	417	0	348	0
39	http://www.inrca.it/login.php	374	0	346	0
40	http://www.inrca.it/PDO/RF/	492	0	340	0
41	http://www.inrca.it/inrca/ESPORTA/COLLABORATORI/	434	0	319	0
42	http://www.inrca.it/PDO/HM/	651	0	291	0
43	http://www.inrca.it/INRCA/ELAB5/	590	0	278	0
44	http://www.inrca.it/inrca/MODTRASPBA/	381	0	264	0
45	http://www.inrca.it/PDO/capcha/capcha	379	0	261	0
46	http://www.inrca.it/inrca/mod_tra_112	441	0	256	0
47	http://www.inrca.it/inrca/backoffice/	2,809	0	208	0
48	http://www.inrca.it/INRCA/MODM2/MailAttacco	802	0	205	0
49	http://www.inrca.it/cgi-bin/luci/?stok=/locale/	208	0	198	0
50	http://www.inrca.it/INRCA/POPUP_COLLAB	487	0	196	0
	Subtotal	1,099,321	188	N/A	0
	Total	1,304,649	188	N/A	0

Daily File Access



Most Downloaded Files



Most Downloaded Files

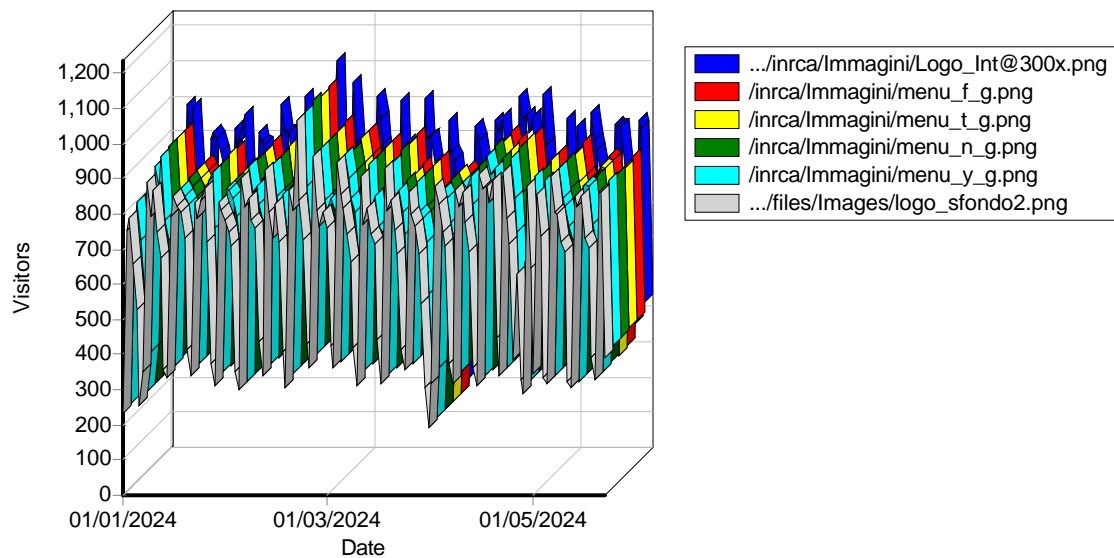
	File	Hits	Incomplete Requests	Visitors	Bandwidth (KB)
1	http://www.inrca.it/robots.txt	10,380	0	7,893	0
2	http://www.inrca.it/inrca/Files/CLINICA/Ancona/Medicina Riabilitativa/R_FrattFemore(1).pdf	4,390	255	3,864	0
3	http://www.inrca.it/inrca/Files/CLINICA/Casatenovo/Laboratorio Analisi/Aggiornamenti/VALORE DIAGNOSTICO DEI MARCATORI TUMORALI.pdf	3,306	222	2,880	0
4	http://www.inrca.it/inrca/files/PAGINE/SANITARIA/Opuscolo Scuola della schiena.pdf	3,271	464	2,525	0
5	http://www.inrca.it/inrca/files/PAGINE/preparazione 4 litri con selg.pdf	2,935	248	2,502	0
6	http://www.inrca.it/inrca/files/Marzio/Documenti/Diabete Gestazionale.pdf	2,111	177	1,786	0
7	http://www.inrca.it/inrca/files/SEDI/ANCONA/Colonscopia Plenvu.pdf	1,683	178	1,404	0
8	http://www.inrca.it/inrca/Files/CLINICA/Ancona/Nutrizione/Brochure disfagia new II.pdf	1,673	186	1,393	0
9	http://www.inrca.it/inrca/files/PAGINE/Preparazione esame ecografico.pdf	1,435	44	1,309	0

10	http://www.inrca.it/inrca/Files/Marzio/CODICI_ESEZIONE.pdf	1,171	53	1,040	0
11	http://www.inrca.it/inrca/Files/CLINICA/Casatenovo/Laboratorio Analisi/Aggiornamenti/Troponine.pdf	1,150	89	1,000	0
12	http://www.inrca.it/inrca/Files/CLINICA/Ancona/Medicina Riabilitativa/La Riabilitazione nella Malattia di Parkinson(1).pdf	1,477	428	970	0
13	http://www.inrca.it/inrca/files/PAGINE/TAC ADDOME CON MDC e ALLEGATO 1.pdf	1,028	55	910	0
14	http://www.inrca.it/inrca/files/concorsi/grad_AVVISO MOBILITA_INFERMIERI per POR MARCHE-sito4.pdf	1,253	29	804	0
15	http://www.inrca.it/inrca/Files/CLINICA/Casatenovo/PRENOTAZIONI E RITIRO REFERTI.pdf	898	59	770	0
16	http://www.inrca.it/inrca/files/SEDI/ANCONA/CUP/LP Individuale.pdf	849	53	718	0
17	http://www.inrca.it/inrca/files/concorsi/8_Pantanetti.pdf	821	34	712	0
18	http://www.inrca.it/inrca/Files/CLINICA/Ancona/CUP/LPI INRCA ANCONA 19APRILE2021.pdf	809	47	706	0
19	http://www.inrca.it/inrca/files/concorsi/BANDO OSS.pdf	815	56	701	0
20	http://www.inrca.it/inrca/files/sedi/pto_inrca.pdf	744	25	649	0
21	http://www.inrca.it/inrca/files/DIRIGENZA/Curriculum dirigenti/Ancona/Pelliccioni Giuseppe.pdf	731	60	618	0
22	http://www.inrca.it/inrca/Files/CLINICA/Casatenovo/Laboratorio Analisi/Aggiornamenti/TROMBOSI VENOSA PROFONDA IL D-DIMERO NELLA PRATICA DI LABORATORIO.pdf	682	36	607	0
23	http://www.inrca.it/inrca/files/gare2/AVVISO2023.pdf	861	129	588	0
24	http://www.inrca.it/inrca/files/DIRIGENZA/Curriculum dirigenti/Fermo/morresi Lorenzo.pdf	633	11	581	0
25	http://www.inrca.it/inrca/Files/Carte dei Servizi/CS Ancona A5 2023.pdf	683	46	579	0
26	http://www.inrca.it/inrca/Files/CLINICA/Ancona/Gastroenterologia/nuovi/PREPARAZIONE COLONSCOPIA.pdf	676	63	551	0
27	http://www.inrca.it/inrca/files/NEWS/SPECIFICHE DI PROGETTO.pdf	666	22	527	0
28	http://www.inrca.it/inrca/files/concorsi/CV COTA.pdf	525	20	457	0
29	http://www.inrca.it/inrca/Files/CLINICA/Ancona/Diagnostica Immagini/PREPARAZIONE-INFORMATIVA entero RM.pdf	489	27	431	0
30	http://www.inrca.it/inrca/files/DIRIGENZA/Curriculum dirigenti/Cagliari/IBBA Raimondo.pdf	456	14	409	0
31	http://www.inrca.it/inrca/files/PAGINE/PDTA01_CN_DGRP_M01 FEES.pdf	444	15	403	0
32	http://www.inrca.it/inrca/files/SEDI/casatenovo/DOCUMENTI/Libera-Professione CASATENNOVO.pdf	450	16	395	0
33	http://www.inrca.it/inrca/Files/CLINICA/Ancona/Diabetologia/Indicazioni Corretta Alimentazione Diabete 2022 HQ.pdf	493	71	386	0
34	http://www.inrca.it/inrca/files/DIRIGENZA/Curriculum dirigenti/Ancona/Mozzicafreddo Giorgio.pdf	446	24	385	0
35	http://www.inrca.it/inrca/files/DIRIGENZA/Curriculum dirigenti/Roma/Scuteri Angelo.pdf	445	27	380	0
36	http://www.inrca.it/inrca/files/concorsi/bando OSS Cosenza e istruzioni sito.pdf	442	32	374	0
37	http://www.inrca.it/inrca/files/PAGINE/LPI INRCA ANCONA 01gennaio18.pdf	412	35	338	0
38	http://www.inrca.it/inrca/files/DIRIGENZA/Curriculum dirigenti/Roma/Bollanti Lucilla.pdf	370	11	334	0
39	http://www.inrca.it/inrca/files/gare2/2023/NOLEGGIO LICENZE RICERCA FINALIZZATA/CV Bouserhal.pdf	433	63	322	0
40	http://www.inrca.it/inrca/Files/CLINICA/Ancona/CUP/ALPI_INRCA_ANCONA_09SETTEMBRE2021.pdf	356	24	311	0
41	http://www.inrca.it/inrca/files/concorsi/sito_2_GRADUATORIA FISIOTERAPISTA.pdf	346	2	309	0
42	http://www.inrca.it/inrca/files/concorsi/sito_3_GRADUATORIA FISIOTERAPISTA.pdf	331	4	295	0
43	http://www.inrca.it/inrca/files/PAGINE/SANITARIA/VALORE DIAGNOSTICO DEI MARCATORI TUMORALI.pdf	435	12	292	0
44	http://www.inrca.it/inrca/files/PAGINE/colonscopia con LOVOL.pdf	345	33	282	0
45	http://www.inrca.it/inrca/files/concorsi/Esito prova pratica farmacista.pdf	320	17	282	0
46	http://www.inrca.it/inrca/files/PAGINE/PRESTAZIONI PRENOTABILIA CUP(1).pdf	323	19	281	0

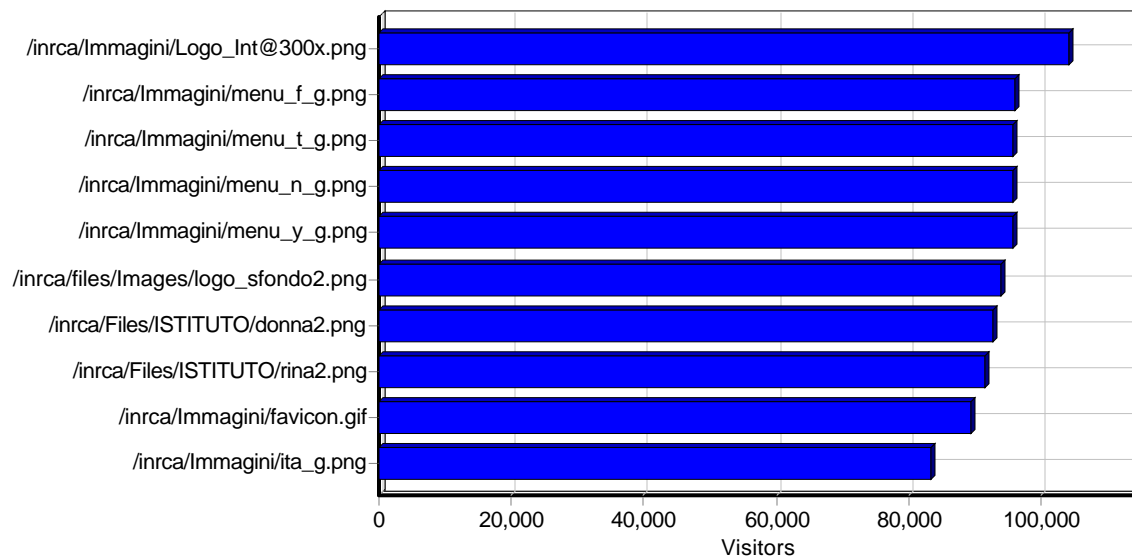
47	http://www.inrca.it/inrca/files/dirigenza/Curriculum dirigenti/Ancona/Curriculum luigi lanari 2012.pdf	295	6	272	0
48	http://www.inrca.it/inrca/files/PAGINE/Preparazione MOVIPREP 2nov15.pdf	410	44	272	0
49	http://www.inrca.it/inrca/files/DIRIGENZA/Curriculum dirigenti/Fermo/Scendoni Pietro.pdf	301	14	271	0
50	http://www.inrca.it/inrca/files/concorsi/Allegato A alla determina n_ 522 del 22_12_2023_ Ammissione concorso 1 DIRIGENTE FARMACISTA_ 79 AMMESSI.pdf	319	27	269	0
Subtotal		56,317	3,626	N/A	0
Total		202,295	17,543	N/A	0

Images

Daily Image Access



Most Requested Images



Most Requested Images

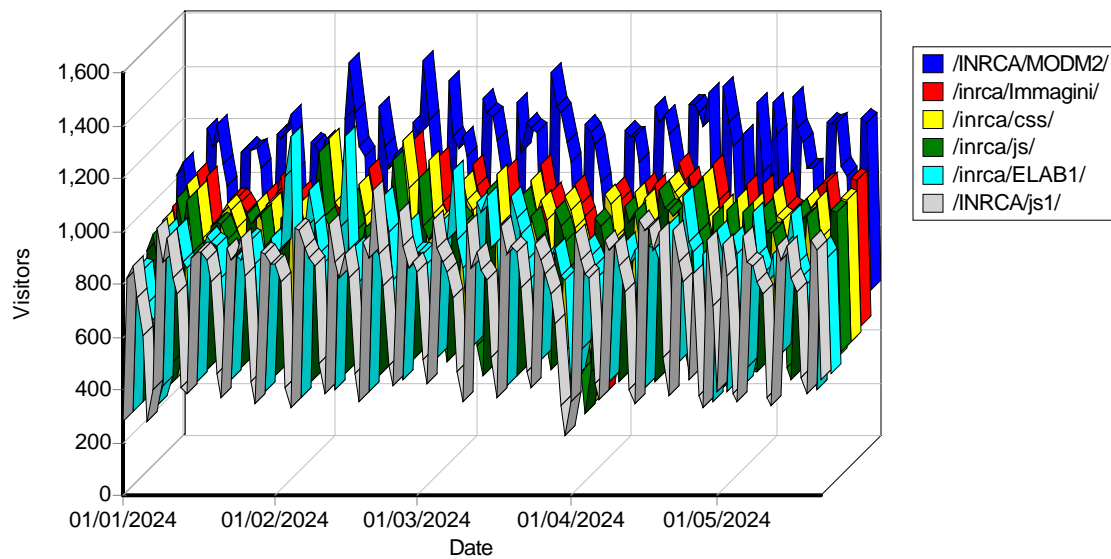
	Image	Hits	Incomplete Requests	Visitors	Bandwidth (KB)
1	http://www.inrca.it/inrca/Immagini/Logo_Int@300x.png	115,360	283	104,015	0
2	http://www.inrca.it/inrca/Immagini/menu_f_g.png	106,792	1	95,884	0

3	http://www.inrca.it/inrca/Immagini/menu_t_g.png	106,662	1	95,799	0
4	http://www.inrca.it/inrca/Immagini/menu_n_g.png	106,594	1	95,760	0
5	http://www.inrca.it/inrca/Immagini/menu_y_g.png	106,467	1	95,626	0
6	http://www.inrca.it/inrca/files/Images/logo_sfondo2.png	103,990	138	93,909	0
7	http://www.inrca.it/inrca/Files/ISTITUTO/donna2.png	103,068	38	92,621	0
8	http://www.inrca.it/inrca/Files/ISTITUTO/rina2.png	101,947	5	91,547	0
9	http://www.inrca.it/inrca/Immagini/favicon.gif	99,726	1	89,398	0
10	http://www.inrca.it/inrca/Immagini/ita_g.png	91,361	1	83,268	0
11	http://www.inrca.it/inrca/images/mappe/sede_an.png	45,286	1,262	38,485	0
12	http://www.inrca.it/inrca/images/mappe/sede_osimo.png	44,899	1,307	38,157	0
13	http://www.inrca.it/inrca/images/mappe/sede_fermo.png	44,233	1,350	37,786	0
14	http://www.inrca.it/inrca/images/mappe/sede_casatenovo.png	44,123	1,419	37,701	0
15	http://www.inrca.it/inrca/images/mappe/sede_cosenza.png	44,316	1,715	37,345	0
16	http://www.inrca.it/inrca/Images/Servizi Online/loghi servizi online_Lab Analisi.png	42,125	18	37,144	0
17	http://www.inrca.it/inrca/Images/Immagini Homepage/Istituto/1600x450 5x1000_HP_5x1000HP.png	42,492	661	36,700	0
18	http://www.inrca.it/inrca/images/mappe/sede_appignano.png	42,909	1,435	36,575	0
19	http://www.inrca.it/inrca/Images/Ricerca/BioGer/1600x450_BioGER ITA.png	42,744	1,436	36,177	0
20	http://www.inrca.it/inrca/Images/Immagini Homepage/Istituto/1600x450 Nuovo Osp INRCA.png	42,591	1,229	35,982	0
21	http://www.inrca.it/inrca/Images/Sliders Caurosel/Banner Asta INRCA.png	41,319	280	35,542	0
22	http://www.inrca.it/inrca/Images/Sliders Caurosel/COVID/Covid_0001_Sicurezza.jpg	40,474	225	35,372	0
23	http://www.inrca.it/inrca/Images/CARDS/dCaPC manifesto 2023 INRCA e CP.png	40,827	526	35,172	0
24	http://www.inrca.it/inrca/Images/IN EVIDENZA/Banner Piao 24-26.png	42,533	1,236	34,916	0
25	http://www.inrca.it/inrca/Images/Sliders Caurosel/Tecnologia_Tecnologia Banner stretto.png	40,377	577	34,748	0
26	http://www.inrca.it/inrca/Images/Sliders Caurosel/Banner Quadrato Asta INRCA.png	40,142	46	34,582	0
27	http://www.inrca.it/inrca/Images/Servizi Online/loghi servizi online_Radiologia.png	39,520	21	34,556	0
28	http://www.inrca.it/inrca/files/images/HOME4.png	39,257	63	34,231	0
29	http://www.inrca.it/inrca/Images/Ricerca/Library/Banner Uptodate III.png	38,757	95	33,623	0
30	http://www.inrca.it/inrca/files/images/new_sede_an_img.png	38,405	78	33,480	0
31	http://www.inrca.it/inrca/files/images/new_sede_fe_img.png	38,141	73	33,302	0
32	http://www.inrca.it/inrca/Images/Servizi Online/loghi servizi online_Telenefrologia.png	38,082	55	33,294	0
33	http://www.inrca.it/inrca/Images/Servizi Online/loghi servizi online_TeleRaibilitazione.png	37,923	28	33,147	0
34	http://www.inrca.it/inrca/Images/Servizi Online/loghi servizi online_Telecardiologia.png	37,927	24	33,135	0
35	http://www.inrca.it/inrca/files/images/new_sede_os_img.png	37,960	62	33,132	0
36	http://www.inrca.it/inrca/files/images/new_sede_ca_img.png	37,926	54	33,108	0
37	http://www.inrca.it/inrca/files/images/new_sede_cs_img.png	37,890	66	33,075	0
38	http://www.inrca.it/inrca/Images/Servizi Online/loghi servizi online_Piede Diabetico.png	37,874	24	33,071	0
39	http://www.inrca.it/inrca/files/images/new_sede_ap_img.png	37,851	91	33,027	0
40	http://www.inrca.it/inrca/Images/Percorsi/Slider Percorsi/Prostata_Inc.png	37,508	3	32,768	0
41	http://www.inrca.it/inrca/Images/Percorsi/Slider Percorsi/Alzheimer.png	37,306	0	32,558	0
42	http://www.inrca.it/inrca/Images/Percorsi/Slider Percorsi/Parkinson.png	37,247	2	32,526	0
43	http://www.inrca.it/inrca/Images/Percorsi/Slider Percorsi/Mal_Cardiovasc.png	37,191	0	32,475	0
44	http://www.inrca.it/inrca/Images/Percorsi/Slider Percorsi/Disfagia.png	37,088	0	32,376	0

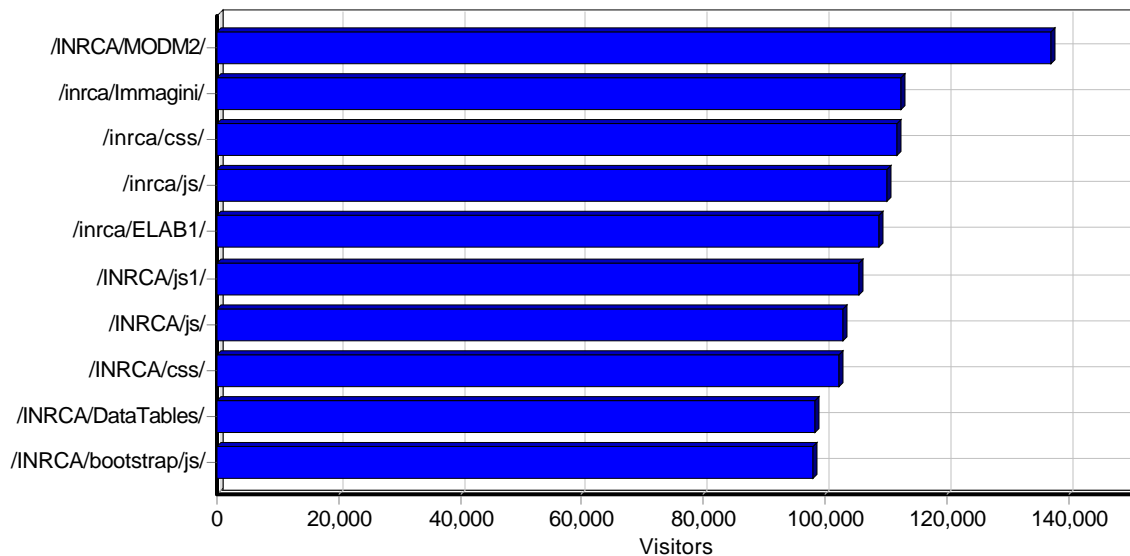
45	http://www.inrca.it/inrca/Images/Percorsi/Slider/Percorsi/Diabete.png	37,018	4	32,307	0
46	http://www.inrca.it/inrca/Images/Percorsi/Slider/Percorsi/Dialisi.png	36,918	2	32,216	0
47	http://www.inrca.it/inrca/Immagini/ita1_g.png	37,312	2	32,040	0
48	http://www.inrca.it/inrca/Images/News/PRECaISEgiu23_bannerino.png	34,478	759	29,197	0
49	http://www.inrca.it/inrca/Images/CARDS/14dicembre23Locandinaevento_new_Inevidenza.png	30,198	740	24,916	0
50	http://www.inrca.it/INRCA/img/avatarM1.png	20,243	0	19,600	0
Subtotal		2,603,377	17,438	N/A	0
Total		3,617,563	19,104	N/A	0

Directories

Daily Directory Access



Most Requested Directories



Most Requested Directories

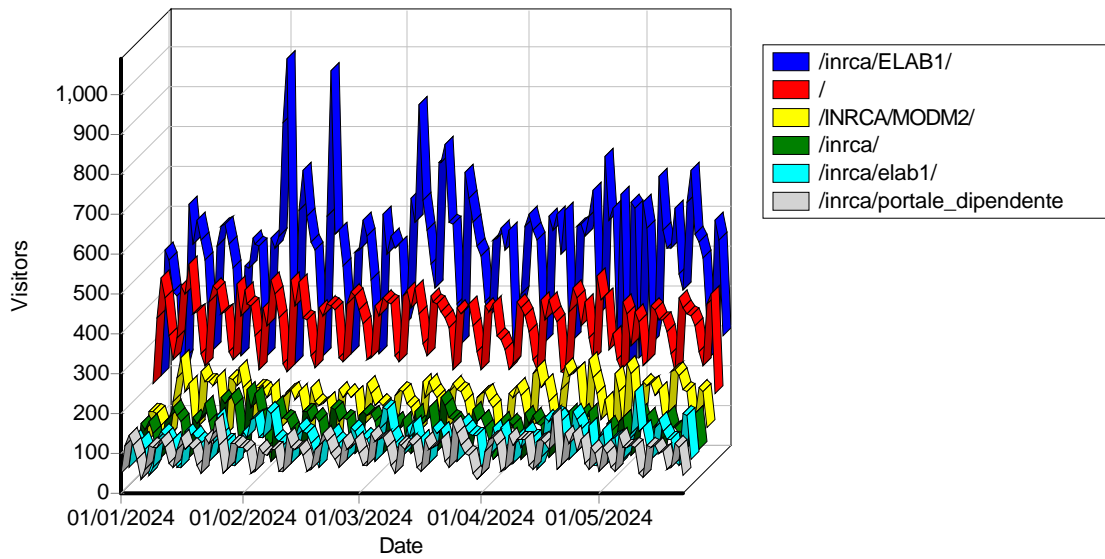
	Directory	Hits	Incomplete Requests	Visitors	Bandwidth (KB)
1	http://www.inrca.it/INRCA/MODM2/	283,481	0	137,239	0

2	http://www.inrca.it/inrca/Immagini/	778,252	291	112,324	0
3	http://www.inrca.it/inrca/css/	733,986	274	111,661	0
4	http://www.inrca.it/inrca/js/	503,729	456	110,213	0
5	http://www.inrca.it/inrca/ELAB1/	245,135	0	108,770	0
6	http://www.inrca.it/INRCA/js1/	817,311	5,111	105,462	0
7	http://www.inrca.it/INRCA/js/	859,816	921	102,793	0
8	http://www.inrca.it/INRCA/css/	1,084,192	313	102,425	0
9	http://www.inrca.it/INRCA/DataTables/	205,014	289	98,497	0
10	http://www.inrca.it/INRCA/bootstrap/js/	108,572	81	98,084	0
11	http://www.inrca.it/inrca/bootstrap/css/	111,884	88	98,058	0
12	http://www.inrca.it/inrca/Files/ISTITUTO/	224,308	87	95,214	0
13	http://www.inrca.it/inrca/files/Images/	103,990	138	93,909	0
14	http://www.inrca.it/inrca/	220,311	0	92,041	0
15	http://www.inrca.it/INRCA/bootstrap/css/	100,858	32	91,514	0
16	http://www.inrca.it/INRCA/font-awesome-4.7.0/fonts/	99,950	166	91,257	0
17	http://www.inrca.it/INRCA/font-awesome-4.7.0/css/	98,464	6	89,404	0
18	http://www.inrca.it/INRCA/FONT/	96,766	0	88,087	0
19	http://www.inrca.it/	128,962	188	66,044	0
20	http://www.inrca.it/inrca/files/images/	332,716	504	58,452	0
21	http://www.inrca.it/inrca/font-awesome-4.7.0/css/	63,976	16	57,064	0
22	http://www.inrca.it/inrca/elab1/	103,009	0	54,292	0
23	http://www.inrca.it/inrca/bootstrap/js/	56,381	65	49,352	0
24	http://www.inrca.it/inrca/Images/Servizi Online/	301,022	222	46,344	0
25	http://www.inrca.it/inrca/FONT/	46,537	0	41,384	0
26	http://www.inrca.it/inrca/Images/Immagini Homepage/Istituto/	93,832	1,928	41,192	0
27	http://www.inrca.it/inrca/images/mappe/	266,141	8,495	40,841	0
28	http://www.inrca.it/inrca/Images/Sliders Caurosel/	122,923	907	38,049	0
29	http://www.inrca.it/inrca/Images/CARDS/	72,468	1,266	37,331	0
30	http://www.inrca.it/INRCA/MODTRASP/	72,164	0	37,206	0
31	http://www.inrca.it/inrca/Images/INEVIDENZA/	59,800	1,600	36,514	0
32	http://www.inrca.it/inrca/Images/Ricerca/Bioger/	43,858	1,438	36,259	0
33	http://www.inrca.it/inrca/Images/Sliders Caurosel/COVID/	42,132	231	35,830	0
34	http://www.inrca.it/inrca/font-awesome-4.7.0/fonts/	40,582	55	35,449	0
35	http://www.inrca.it/inrca/Images/Percorsi/Slider Percorsi/	261,211	11	34,679	0
36	http://www.inrca.it/inrca/Images/Ricerca/Library/	39,411	95	33,724	0
37	http://www.inrca.it/inrca/Images/	66,573	2	30,828	0
38	http://www.inrca.it/inrca/Images/News/	55,202	795	29,807	0
39	http://www.inrca.it/inrca/Images/Piantine/	35,308	47	28,957	0
40	http://www.inrca.it/inrca/Images/Immagini Homepage/	36,761	123	28,134	0
41	http://www.inrca.it/inrca/elab3/	44,949	0	27,816	0
42	http://www.inrca.it/INRCA/img/	48,615	6	26,561	0
43	http://www.inrca.it/inrca/immagini/	99,405	3	19,183	0
44	http://www.inrca.it/inrca/files/concorsi/	33,515	3,331	18,259	0
45	http://www.inrca.it/inrca/DataTables/	19,983	10	18,022	0
46	http://www.inrca.it/inrca/Files/images/	63,966	35	17,765	0
47	http://www.inrca.it/INRCA/MODTRASP/css/	16,714	0	15,197	0
48	http://www.inrca.it/inrca/files/PAGINE/	17,633	1,631	13,334	0
49	http://www.inrca.it/inrca/Images/FOTO_PERSONALE/	15,183	3	13,069	0
50	http://www.inrca.it/inrca/Files/images/ISTITUTO/	14,998	68	12,166	0
	Subtotal	9,391,949	31,328	N/A	0

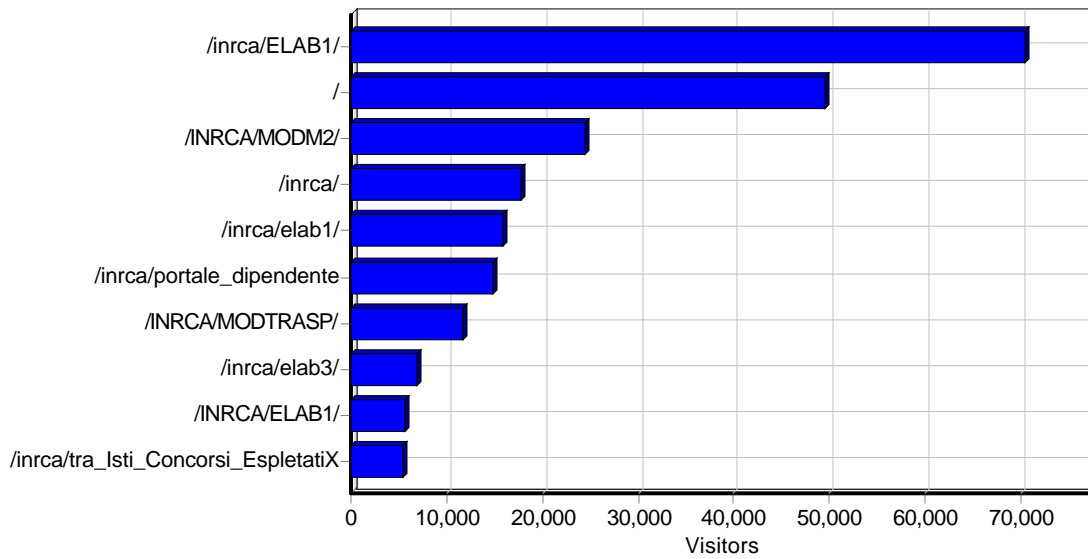
Total	10,249,308	46,016	N/A	0
-------	------------	--------	-----	---

Entry Pages

Daily Entry Pages



Top Entry Pages



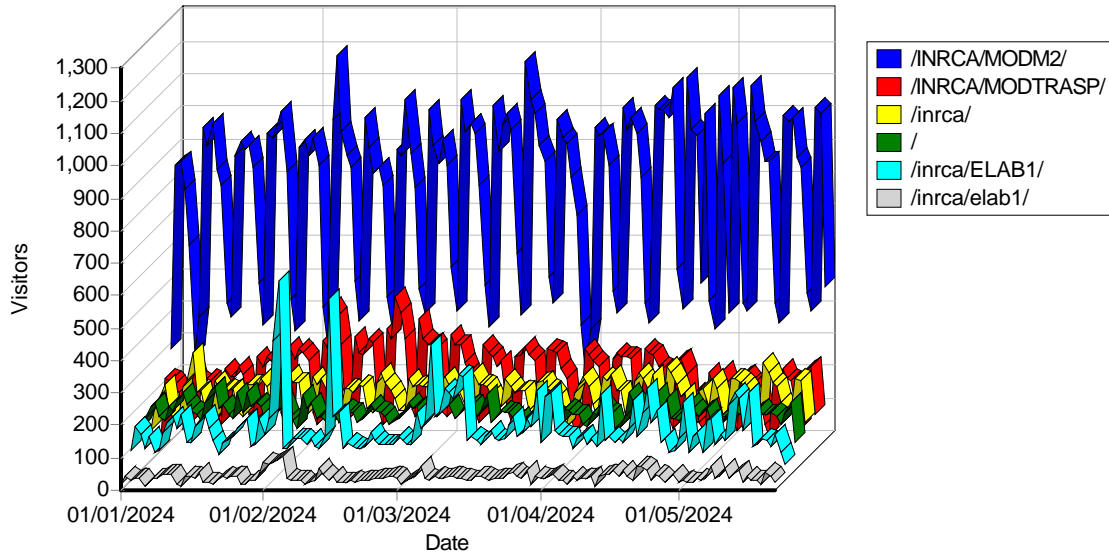
Top Entry Pages

	Page	Visitors
1	http://www.inrca.it/inrca/ELAB1/	70,497
2	http://www.inrca.it/	49,476
3	http://www.inrca.it/INRCA/MODM2/	24,439
4	http://www.inrca.it/inrca/	17,665
5	http://www.inrca.it/inrca/elab1/	15,883
6	http://www.inrca.it/inrca/portale_dipendente	14,751
7	http://www.inrca.it/INRCA/MODTRASP/	11,766
8	http://www.inrca.it/inrca/elab3/	6,924
9	http://www.inrca.it/INRCA/ELAB1/	5,637

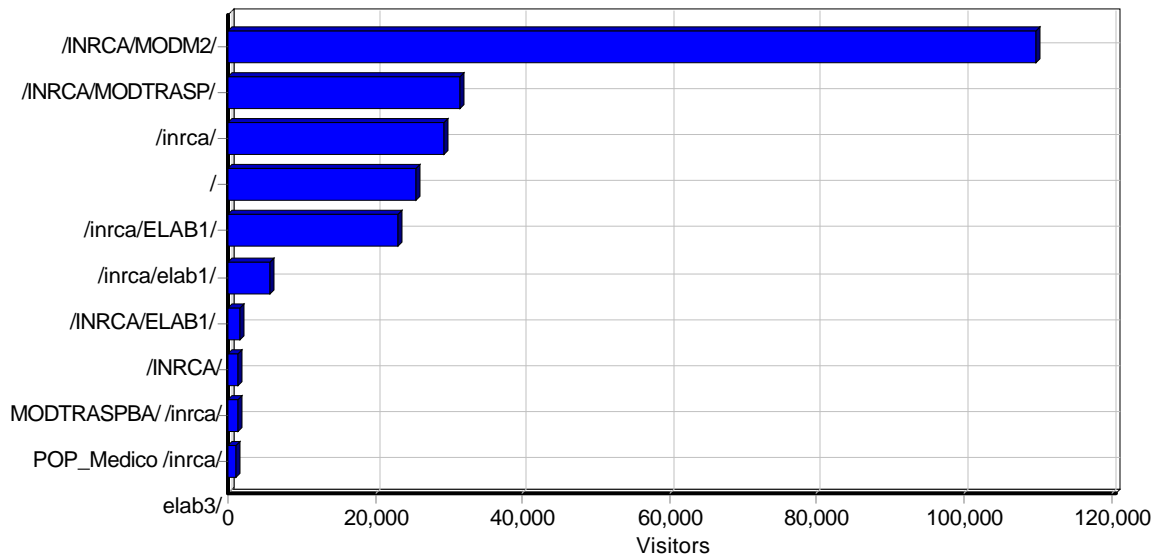
10	http://www.inrca.it/inrca/tra_Isti_Concorsi_EspletatiX	5,527
11	http://www.inrca.it/inrca/ELAB3/	3,373
12	http://www.inrca.it/inrca/home	2,338
13	http://www.inrca.it/INRCA/	1,310
14	http://www.inrca.it/wp-login.php	1,174
15	http://www.inrca.it/inrca/POP_Medico	1,053
16	http://www.inrca.it/INRCA/pretorio_incl2	679
17	http://www.inrca.it/inrca/advantage/focuson	626
18	http://www.inrca.it/inrca/Ric_Isti_Posizioni	438
19	http://www.inrca.it/inrca/Ric_Isti_Gare	431
20	http://www.inrca.it/inrca/Ric_Isti_Pretorio	426
21	http://www.inrca.it/zz/	361
22	http://www.inrca.it/INRCA/Home	340
23	http://www.inrca.it/inrca/elab7/	335
24	http://www.inrca.it/inrca/ELAB5/	321
25	http://www.inrca.it/PDO/RF/	317
26	http://www.inrca.it/login.php	310
27	http://www.inrca.it/inrca/MODSHARE/	281
28	http://www.inrca.it/inrca/elab4/	251
29	http://www.inrca.it/inrca/elab6/	237
30	http://www.inrca.it/inrca/ESPORTA/COLLABORATORI/	223
31	http://www.inrca.it/inrca/mod_tra_112	221
32	http://www.inrca.it/cgi-bin/Luci/?stok=/locale/	197
33	http://www.inrca.it/admin.php	196
34	http://www.inrca.it/inrca/News2	166
35	http://www.inrca.it/inrca/elab	153
36	http://www.inrca.it/inrca/Home	151
37	http://www.inrca.it/INRCA/MODM5/	149
38	http://www.inrca.it/inrca/esporta_concorsi_espletati_csv	147
39	http://www.inrca.it/inrca/Eventi2	126
40	http://www.inrca.it/inrca/Elab3/	125
41	http://www.inrca.it/inrca/TAPS/	111
42	http://www.inrca.it/INRCA/elab1/	110
43	http://www.inrca.it/INRCA/ELAB5/	102
44	http://www.inrca.it/plus/ad_js.php	98
45	http://www.inrca.it/inrca/telemed/	98
46	http://www.inrca.it/inrca/MODTRASPBA/	94
47	http://www.inrca.it/.git/config/	92
48	http://www.inrca.it/INRCA/MODM4/	88
49	http://www.inrca.it/inrca/Mod_uo_114	87
50	http://www.inrca.it/INRCA/elab4/	84
	Subtotal	239,984
	Total	244,016

Exit Pages

Daily Exit Pages



Top Exit Pages



Top Exit Pages

	Page	Visitors
1	http://www.inrca.it/INRCA/MODM2/	109,704
2	http://www.inrca.it/INRCA/MODTRASP/	31,623
3	http://www.inrca.it/inrca/	29,393
4	http://www.inrca.it/	25,512
5	http://www.inrca.it/inrca/ELAB1/	22,981
6	http://www.inrca.it/inrca/elab1/	5,644
7	http://www.inrca.it/INRCA/ELAB1/	1,689
8	http://www.inrca.it/INRCA/MODTRASPBA/	1,351
9	http://www.inrca.it/inrca/POP_Medico	1,280
10	http://www.inrca.it/inrca/elab3/	1,091
11	http://www.inrca.it/xmlrpc.php	768
12	http://www.inrca.it/inrca/advantage/focuson	627

13	http://www.inrca.it/inrca/ELAB3/	562
14	http://www.inrca.it/inrca/portale_dipendente	519
15	http://www.inrca.it/INRCA/POPUP_GareNEW	455
16	http://www.inrca.it/inrca/Ric_Isti_Posizioni	438
17	http://www.inrca.it/inrca/tra_Isti_Concorsi_EspletatiX	414
18	http://www.inrca.it/INRCA/pretorio_incl2	392
19	http://www.inrca.it/inrca/MODSHARE/	321
20	http://www.inrca.it/PDO/RF/	303
21	http://www.inrca.it/login.php	295
22	http://www.inrca.it/inrca/elab4/	276
23	http://www.inrca.it/wp-login.php	275
24	http://www.inrca.it/inrca/ELAB5/	268
25	http://www.inrca.it/inrca/home	258
26	http://www.inrca.it/INRCA/MODM4/	235
27	http://www.inrca.it/inrca/ESPORTA/COLLABORATORI/	225
28	http://www.inrca.it/admin.php	215
29	http://www.inrca.it/cgi-bin/Luci/?stok=/locale/	198
30	http://www.inrca.it/INRCA/MODM5/	195
31	http://www.inrca.it/inrca/News2	166
32	http://www.inrca.it/INRCA/Home	160
33	http://www.inrca.it/inrca/esporta_concorsi_espletati_csv	147
34	http://www.inrca.it/info.php	145
35	http://www.inrca.it/PDO/US/	142
36	http://www.inrca.it/inrca/elab7/	131
37	http://www.inrca.it/inrca/Eventi2	129
38	http://www.inrca.it/inrca/TAPS/	115
39	http://www.inrca.it/INRCA/MODM3/	113
40	http://www.inrca.it/inrca/elab6/	108
41	http://www.inrca.it/INRCA/ELAB5/	100
42	http://www.inrca.it/plus/flink_add.php	98
43	http://www.inrca.it/.git/config/	98
44	http://www.inrca.it/inrca/MODTRASPBA/	96
45	http://www.inrca.it/inrca/files/newsletter/022024/content.html	93
46	http://www.inrca.it/inrca/Mod_uo_114	91
47	http://www.inrca.it/inrca/telemed	90
48	http://www.inrca.it/INRCA/POPUP_COLLAB	88
49	http://www.inrca.it/index.php	84
50	http://www.inrca.it/inrca/Esporta_Concorsi_Espletati	78
	Subtotal	239,779
	Total	244,016

Paths

Top Paths Through Site

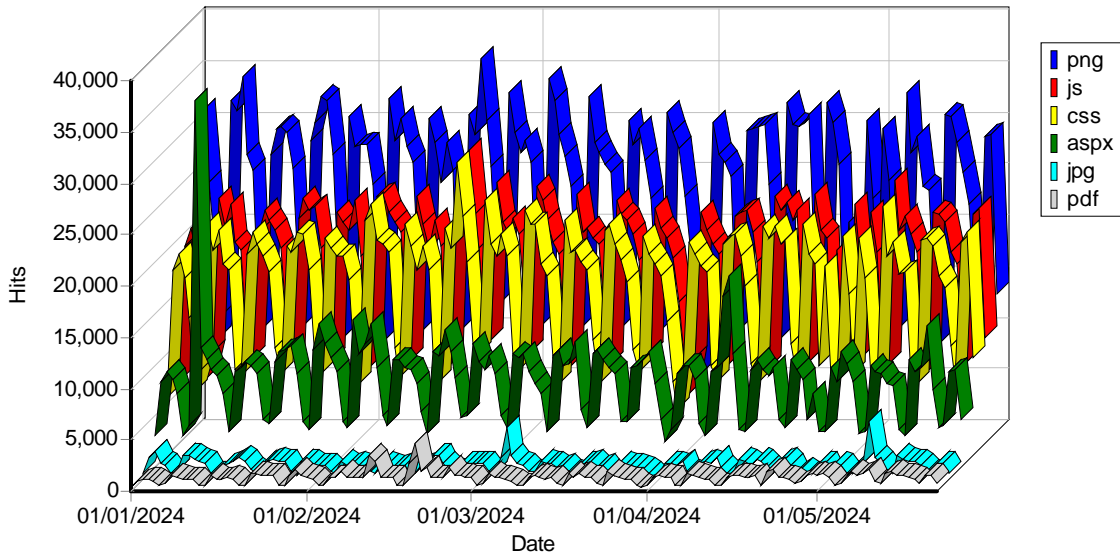
	Path	Visitors	% of Total Visitors
1	/inrca/ELAB1/->/INRCA/MODM2/	30,685	12.57%
2	/	23,493	9.63%
3	/inrca/ELAB1/	17,720	7.26%
4	/inrca/portale_dipendente->/inrca/elab1/->/INRCA/MODM2/	10,879	4.46%

5	/INRCA/MODM2/	10,783	4.42%
6	/ -> /inrca/	10,649	4.36%
7	/INRCA/MODTRASP/	7,616	3.12%
8	/inrca/elab1/ -> /INRCA/MODM2/	6,369	2.61%
9	/inrca/ELAB1/ -> /INRCA/MODM2/ -> /inrca/ELAB1/ -> /INRCA/MODM2/	5,963	2.44%
10	/inrca/	5,799	2.38%
11	/INRCA/MODM2/ -> /inrca/	5,044	2.07%
12	/inrca/elab3/ -> /INRCA/MODTRASP/	3,935	1.61%
13	/ -> /inrca/ -> /inrca/ELAB1/ -> /INRCA/MODM2/	3,660	1.50%
14	/INRCA/ELAB1/ -> /INRCA/MODM2/	3,553	1.46%
15	/inrca/elab1/	3,547	1.45%
16	/inrca/ -> /inrca/elab1/ -> /INRCA/MODM2/	2,571	1.05%
17	/inrca/ -> /inrca/ELAB1/ -> /INRCA/MODM2/	2,461	1.01%
18	/inrca/tra_Isti_Concorsi_EspletatiX -> /inrca/ELAB1/ -> /INRCA/MODM2/ -> /inrca/elab3/ -> /INRCA/MODTRASP/	2,320	0.95%
19	/inrca/ELAB3/ -> /INRCA/MODTRASP/	2,028	0.83%
20	/inrca/ELAB1/ -> /INRCA/MODM2/ -> /inrca/ELAB1/ -> /INRCA/MODM2/ -> /inrca/ELAB1/ -> /INRCA/MODM2/	1,862	0.76%
21	/INRCA/MODTRASP/ -> /inrca/elab1/ -> /INRCA/MODM2/ -> /inrca/elab3/ -> /INRCA/MODTRASP/	1,559	0.64%
22	/INRCA/ELAB1/	1,174	0.48%
23	/ -> /inrca/ -> /inrca/elab1/ -> /INRCA/MODM2/	1,062	0.44%
24	/ -> /inrca/ -> /inrca/ELAB1/ -> /INRCA/MODM2/ -> /inrca/ELAB1/ -> /INRCA/MODM2/	967	0.40%
25	/inrca/home -> /inrca/	959	0.39%
26	/INRCA/MODM2/ -> /inrca/ -> /inrca/elab1/ -> /INRCA/MODM2/	948	0.39%
27	/inrca/portale_dipendente -> /inrca/elab1/ -> /INRCA/MODM2/ -> /inrca/portale_dipendente -> /inrca/elab1/ -> /INRCA/MODM2/	928	0.38%
28	/INRCA/MODM2/ -> /inrca/ELAB1/ -> /INRCA/MODM2/	895	0.37%
29	/INRCA/MODM2/ -> /inrca/ -> /INRCA/MODM2/ -> /inrca/	814	0.33%
30	/inrca/elab1/ -> /INRCA/MODM2/ -> /inrca/elab1/ -> /INRCA/MODM2/	806	0.33%
31	/inrca/POP_Medico	804	0.33%
32	/wp-login.php -> /xmlrpc.php	763	0.31%
33	/inrca/ELAB1/ -> /INRCA/MODM2/ -> /inrca/ELAB1/ -> /INRCA/MODM2/ -> /inrca/ELAB1/ -> /INRCA/MODM2/ -> /inrca/ELAB1/ -> /INRCA/MODM2/	757	0.31%
34	/INRCA/MODM2/ -> /inrca/ -> /inrca/ELAB1/ -> /INRCA/MODM2/	692	0.28%
35	/inrca/elab1/ -> /INRCA/MODM2/ -> /inrca/ELAB1/ -> /INRCA/MODM2/	689	0.28%
36	/inrca/elab3/ -> /INRCA/MODTRASP/ -> /inrca/elab3/ -> /INRCA/MODTRASP/	669	0.27%
37	/inrca/ -> /inrca/elab3/ -> /INRCA/MODTRASP/	630	0.26%
38	/inrca/advantage/focuson	622	0.25%
39	/inrca/ELAB1/ -> /INRCA/MODM2/ -> /inrca/	600	0.25%
40	/inrca/tra_Isti_Concorsi_EspletatiX -> /inrca/ELAB1/ -> /INRCA/MODM2/ -> /inrca/ELAB1/ -> /INRCA/MODM2/ -> /inrca/elab3/ -> /INRCA/MODTRASP/	565	0.23%
41	/inrca/elab3/	558	0.23%
42	/inrca/ELAB1/ -> /INRCA/MODM2/ -> /inrca/elab1/ -> /INRCA/MODM2/	545	0.22%
43	/inrca/ELAB1/ -> /inrca/elab1/	522	0.21%
44	/inrca/ELAB1/ -> /	499	0.20%
45	/ -> /inrca/ELAB1/	490	0.20%
46	/inrca/elab1/ -> /inrca/ELAB1/	451	0.18%
47	/inrca/ -> /inrca/ELAB1/ -> /INRCA/MODM2/ -> /inrca/elab3/ -> /INRCA/MODTRASP/	442	0.18%
48	/inrca/Ric_Isti_Posizioni	438	0.18%
49	/ -> /inrca/ -> /inrca/ELAB1/ -> /INRCA/MODM2/ -> /inrca/elab3/ -> /INRCA/MODTRASP/	404	0.17%
50	/inrca/elab1/ -> /INRCA/MODM2/ -> /inrca/ELAB1/ -> /INRCA/MODM2/ -> /inrca/ELAB1/ -> /INRCA/MODM2/	383	0.16%
	Subtotal	182,572	74.82%

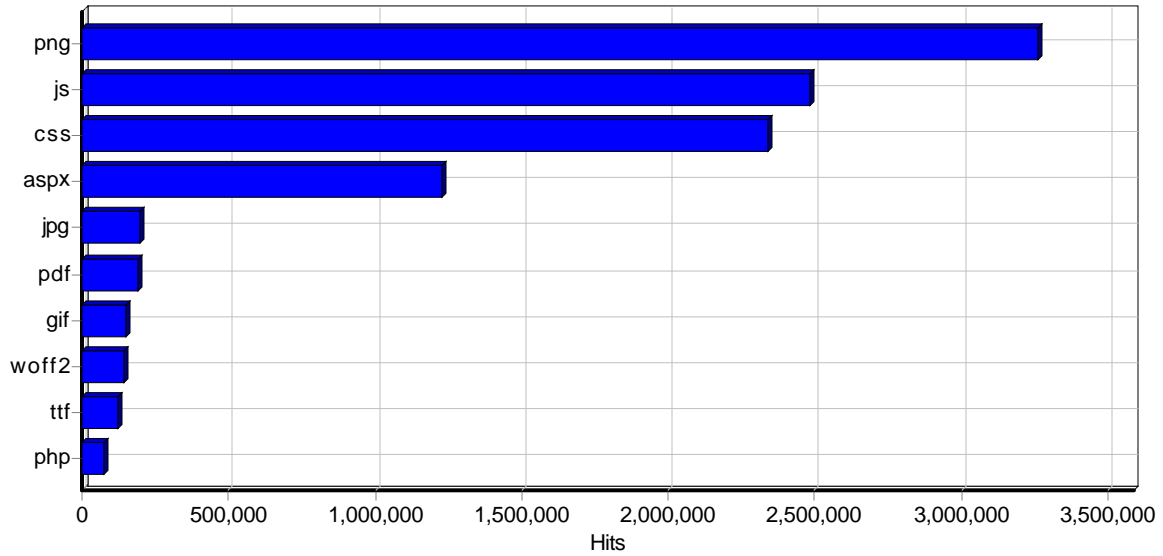
Total	244,016	100.00%
-------	---------	---------

File Types

Daily File Type Access



Most Requested File Types



Most Requested File Types

	File Type	Hits	Incomplete Requests	Bandwidth (KB)
1	png	3,263,425	18,637	0
2	js	2,482,779	6,929	0
3	css	2,341,120	533	0
4	aspx	1,225,601	188	0
5	jpg	197,396	456	0
6	pdf	188,632	17,489	0
7	gif	153,286	9	0
8	woff2	140,435	226	0
9	ttf	120,876	206	0

10	php	74,131	0	0
11	eot	14,429	0	0
12	txt	11,122	0	0
13	jpeg	3,456	2	0
14	docx	2,977	41	0
15	html	2,742	0	0
16	cgi	2,365	0	0
17	xml	2,126	0	0
18	bmp	2,059	2	0
19	doc	1,662	33	0
20	zip	1,587	26	0
21	php7	1,290	0	0
22	ico	1,228	0	0
23	mp4	1,217	1,194	0
24	xlsx	943	4	0
25	jsp	904	0	0
26	env	890	0	0
27	json	673	0	0
28	htm	623	0	0
29	pl	476	0	0
30	woff	437	1	0
31	sql	404	0	0
32	fit	398	0	0
33	xls	386	4	0
34	action	371	0	0
35	do	352	0	0
36	exe	348	28	0
37	gz	279	0	0
38	ashx	274	0	0
39	map	270	0	0
40	rar	269	0	0
41	tgz	260	0	0
42	rtf	239	4	0
43	alfa	237	0	0
44	bak	211	0	0
45	cfm	180	0	0
46	suspected	147	0	0
47	php3	95	0	0
48	svg	91	0	0
49	No Extension	89	0	0
50	local	80	0	0
	Subtotal	10,245,867	46,012	0
	Total	10,249,308	46,016	0

Visitors

Hosts

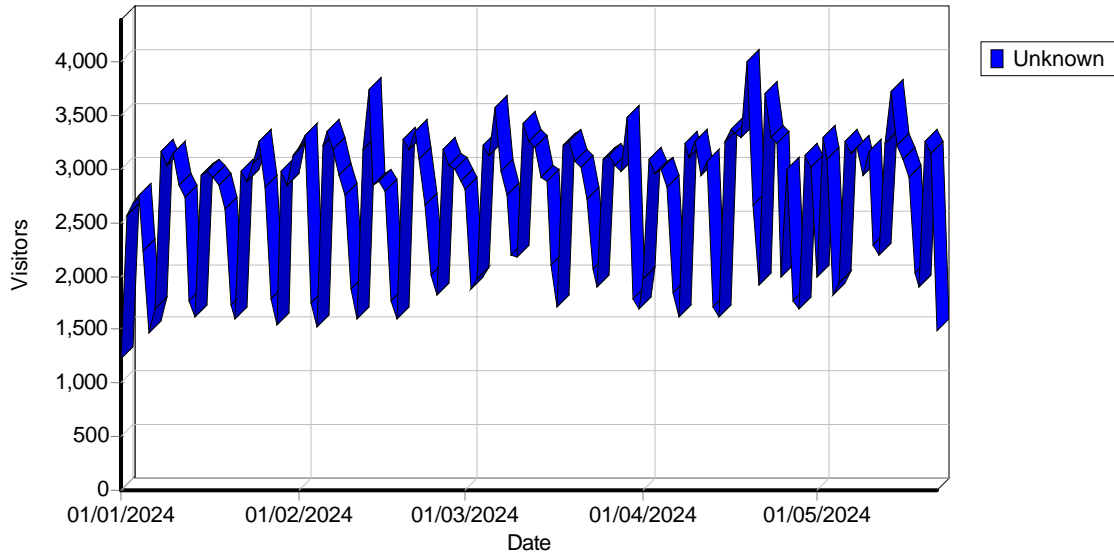
Top Hosts

	Host	Country	Hits	Visitors	Bandwidth (KB)
1	72.14.201.20	United States	6,272	1,626	0
2	193.186.4.23	Poland	7,407	1,618	0
3	72.14.201.23	United States	6,287	1,597	0
4	72.14.201.21	United States	6,294	1,594	0
5	72.14.201.22	United States	6,024	1,577	0
6	72.14.201.19	United States	5,581	1,569	0
7	193.186.4.19	Poland	5,092	1,533	0
8	193.186.4.22	Poland	6,828	1,530	0
9	193.186.4.21	Poland	6,662	1,489	0
10	193.186.4.20	Poland	5,844	1,442	0
11	193.186.4.17	Poland	4,662	1,426	0
12	74.125.208.36	United States	1,760	1,384	0
13	74.125.208.34	United States	1,668	1,379	0
14	74.125.208.35	United States	1,644	1,364	0
15	130.14.25.148	United States	2,576	1,288	0
16	72.14.201.18	United States	3,489	1,240	0
17	2.228.87.254	Italy	966,520	1,029	0
18	72.14.201.17	United States	1,817	893	0
19	84.38.48.38	Italy	113,703	825	0
20	93.41.35.241	Italy	3,155	824	0
21	72.14.201.16	United States	1,044	713	0
22	93.61.45.13	Italy	52,996	635	0
23	2.228.87.253	Italy	31,847	614	0
24	104.28.98.59	United States	9,323	613	0
25	104.28.98.58	United States	10,416	610	0
26	213.26.48.135	Italy	48,625	610	0
27	84.38.48.37	Italy	45,372	575	0
28	193.204.170.245	Italy	18,264	532	0
29	66.249.76.78	United States	1,887	516	0
30	3.224.220.101	United States	6,059	506	0
31	23.22.35.162	United States	6,095	504	0
32	5.45.80.13	Russian Federation	542	500	0
33	52.70.240.171	United States	6,102	490	0
34	104.28.62.71	United States	6,849	444	0
35	87.26.225.38	Italy	28,408	424	0
36	104.28.98.47	United States	9,448	406	0
37	66.249.76.64	United States	1,021	381	0
38	93.33.225.123	Italy	564	378	0
39	104.28.62.72	United States	5,334	374	0
40	185.56.218.12	Italy	1,187	371	0
41	93.47.170.157	Italy	7,283	345	0
42	93.47.170.156	Italy	20,515	297	0
43	193.205.131.2	Italy	18,538	296	0
44	101.56.67.106	India	23,208	289	0

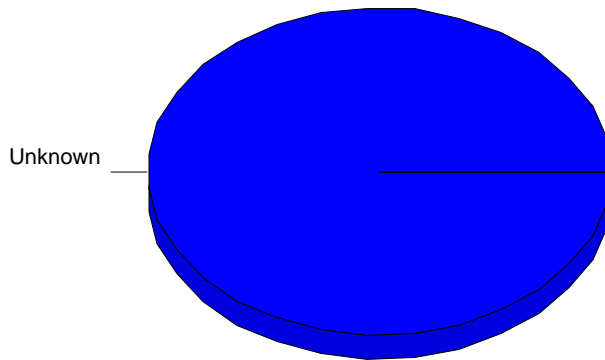
45	66.249.76.65	United States	579	283	0
46	195.212.120.152	Unknown	281	281	0
47	104.28.98.46	United States	6,100	278	0
48	66.249.66.20	United States	1,516	266	0
49	130.14.24.56	United States	528	264	0
50	20.191.45.212	United States	1,362	256	0
Subtotal			1,534,578	40,278	0
Total			11,381,158	385,056	0

Top-Level Domains

Daily Top-Level Domains



Top-Level Domains

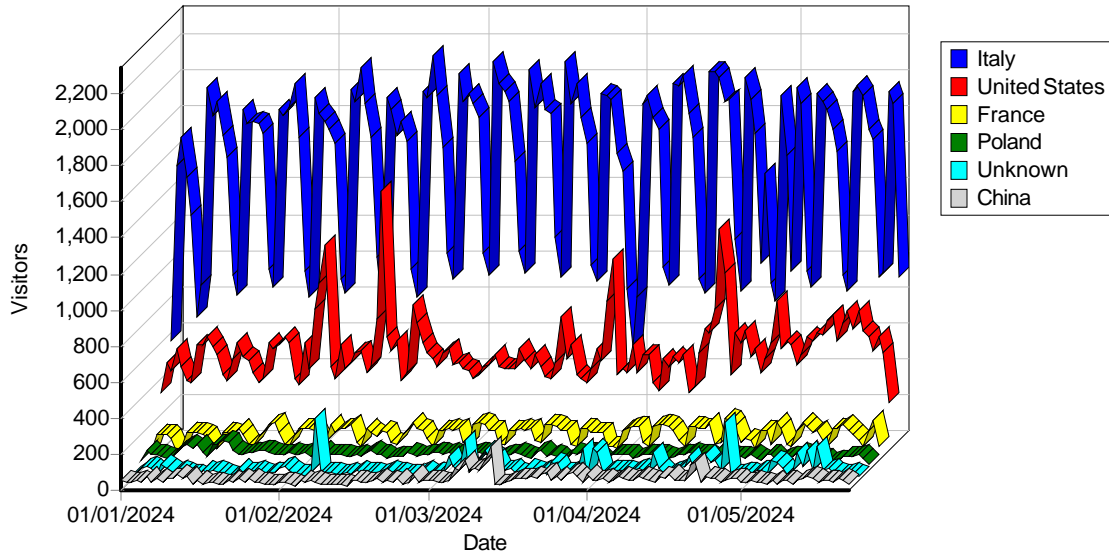


Top-Level Domains

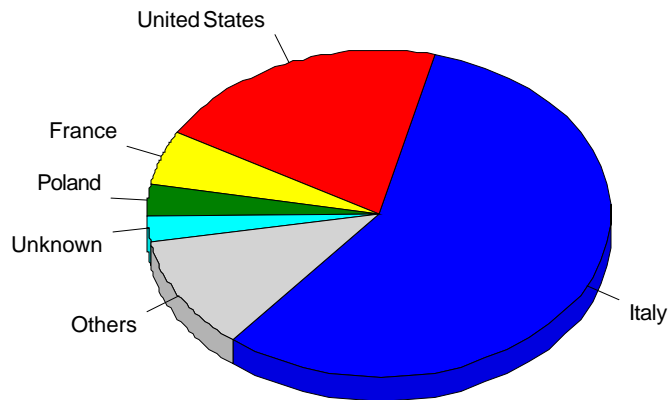
	Domain	Hits	Visitors	% of Total Visitors	Bandwidth (KB)
1	Unknown	11,381,158	385,056	100.00%	0
Total		11,381,158	385,056	100.00%	0

Countries

Daily Countries Activity



Most Active Countries

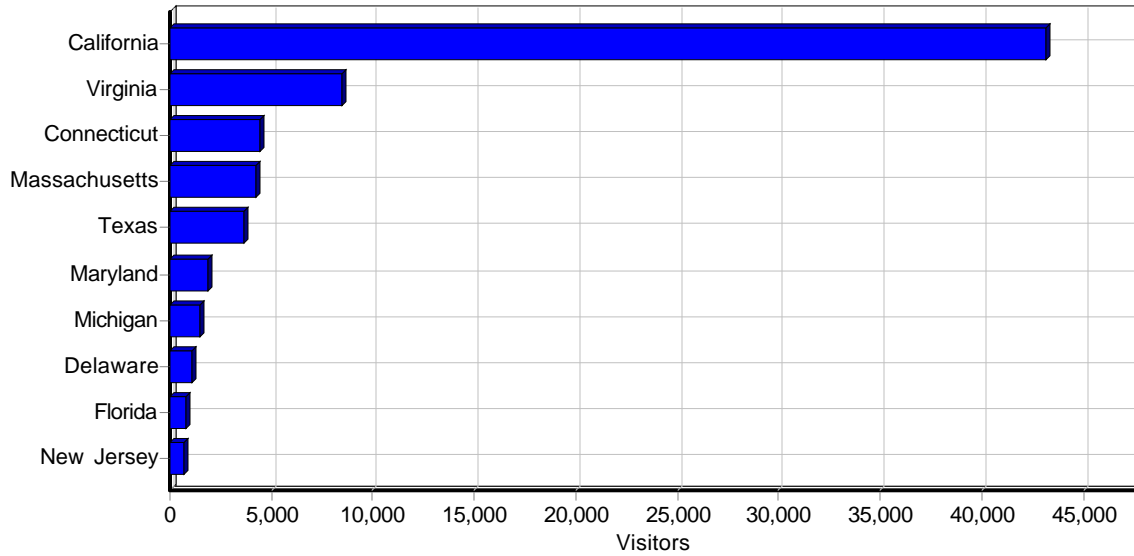


Most Active Countries

	Country	Hits	Visitors	% of Total Visitors	Bandwidth (KB)
1	Italy	8,937,693	219,128	56.91%	0
2	United States	916,558	79,347	20.61%	0
3	France	662,606	20,750	5.39%	0
4	Poland	89,382	12,478	3.24%	0
5	Unknown	140,033	9,370	2.43%	0
6	China	25,546	8,620	2.24%	0
7	Russian Federation	19,826	6,634	1.72%	0
8	India	184,740	5,597	1.45%	0
9	Germany	46,529	2,769	0.72%	0
10	United Kingdom	61,438	1,994	0.52%	0
11	Canada	7,338	1,771	0.46%	0
12	Netherlands	24,045	1,245	0.32%	0

13	Hong Kong	4,499	1,228	0.32%	0
14	Romania	21,873	975	0.25%	0
15	Switzerland	8,719	908	0.24%	0
16	Iran	10,770	713	0.19%	0
17	Japan	2,870	700	0.18%	0
18	Denmark	53,424	698	0.18%	0
19	Sweden	8,687	690	0.18%	0
20	Kazakhstan	945	656	0.17%	0
21	Australia	2,462	614	0.16%	0
22	Ireland	8,910	595	0.15%	0
23	Spain	14,975	580	0.15%	0
24	Belgium	7,889	557	0.14%	0
25	Bulgaria	6,332	495	0.13%	0
26	Israel	21,324	389	0.10%	0
27	Korea, Republic of	1,249	351	0.09%	0
28	Indonesia	4,065	293	0.08%	0
29	Czech Republic	1,450	277	0.07%	0
30	Brazil	2,881	269	0.07%	0
31	Ukraine	4,978	261	0.07%	0
32	Greece	22,560	256	0.07%	0
33	Moldova	1,825	198	0.05%	0
34	South Africa	662	175	0.05%	0
35	New Zealand	255	166	0.04%	0
36	Norway	1,218	162	0.04%	0
37	Iraq	189	157	0.04%	0
38	Bangladesh	1,241	156	0.04%	0
39	Austria	2,741	155	0.04%	0
40	Turkey	3,794	135	0.04%	0
41	Saudi Arabia	479	124	0.03%	0
42	Vietnam	591	113	0.03%	0
43	Philippines	2,654	104	0.03%	0
44	Thailand	1,686	102	0.03%	0
45	Albania	3,983	100	0.03%	0
46	Singapore	1,673	87	0.02%	0
47	Finland	2,568	86	0.02%	0
48	Egypt	913	82	0.02%	0
49	Portugal	4,105	73	0.02%	0
50	Mongolia	115	68	0.02%	0
	Subtotal	11,357,288	383,451	99.58%	0
	Total	11,381,158	385,056	100.00%	0

Most Active US States



Most Active US States

	State	Hits	Visitors	Bandwidth (KB)
1	California	418,504	43,189	0
2	Virginia	74,995	8,477	0
3	Connecticut	42,454	4,430	0
4	Massachusetts	46,177	4,269	0
5	Texas	93,990	3,633	0
6	Maryland	4,240	1,831	0
7	Michigan	24,451	1,477	0
8	Delaware	2,979	1,118	0
9	Florida	10,207	759	0
10	New Jersey	52,736	725	0
11	New York	4,734	594	0
12	Arizona	2,147	533	0
13	Washington	1,686	478	0
14	Colorado	11,451	427	0
15	Nevada	822	424	0
16	North Carolina	1,794	419	0
17	Oregon	3,077	330	0
18	Illinois	1,523	263	0
19	Georgia	4,072	247	0
20	Indiana	3,913	222	0
21	Pennsylvania	1,024	167	0
22	Minnesota	689	145	0
23	Utah	11,720	143	0
24	District of Columbia	244	112	0
25	Iowa	943	112	0
26	Wyoming	652	106	0
27	Missouri	51,403	92	0
28	Wisconsin	403	76	0
29	Ohio	636	67	0

30	Louisiana	260	51	0
31	Oklahoma	994	46	0
32	Kansas	361	46	0
33	South Carolina	3,922	24	0
34	Alabama	295	22	0
35	Tennessee	85	5	0
36	South Dakota	114	5	0
37	Nebraska	209	5	0
38	Kentucky	7	5	0
39	New Hampshire	48	5	0
40	New Mexico	131	4	0
41	West Virginia	120	2	0
42	Arkansas	2	2	0
43	Hawaii	2	2	0
44	Mississippi	2	2	0
45	Rhode Island	2	2	0
46	Alaska	1	1	0
47	Montana	2	1	0
48	Vermont	64	1	0
49	Maine	3	1	0
	Total	880,290	75,097	0

Cities

Most Active Cities

	City	Hits	Visitors	Bandwidth (KB)
1	Milan, Italy	913,071	26,945	0
2	Mountain View, California, United States	175,475	24,870	0
3	Rome, Italy	339,644	9,961	0
4	Naples, Italy	261,425	7,780	0
5	Cupertino, California, United States	18,256	6,982	0
6	San Francisco, California, United States	89,653	5,482	0
7	Falls Church, Virginia, United States	13,027	4,699	0
8	Fairfield, Connecticut, United States	42,014	4,311	0
9	Ancona, Italy	291,010	4,310	0
10	Mumbai, India	153,176	3,899	0
11	Cambridge, Massachusetts, United States	40,852	3,844	0
12	Ashburn, Virginia, United States	55,238	3,538	0
13	San Jose, California, United States	26,049	2,464	0
14	Salerno, Italy	99,656	2,425	0
15	Paris, France	73,533	2,359	0
16	Turin, Italy	65,251	2,127	0
17	Florence, Italy	76,225	2,076	0
18	Houston, Texas, United States	33,680	1,983	0
19	Shenzhen, China	3,749	1,975	0
20	San Diego, California, United States	26,956	1,946	0
21	Bethesda, Maryland, United States	3,703	1,802	0
22	Palermo, Italy	66,702	1,756	0
23	Collegno, Italy	1,001,744	1,729	0

24	Milano, Italy	61,386	1,693	0
25	Macerata, Italy	58,378	1,534	0
26	Pesaro, Italy	56,418	1,410	0
27	Dallas, Texas, United States	53,180	1,388	0
28	Crispano, Italy	52,356	1,366	0
29	Ann Arbor, Michigan, United States	19,402	1,350	0
30	Shanghai, China	3,247	1,191	0
31	Bologna, Italy	42,480	1,190	0
32	Wilmington, Delaware, United States	2,844	1,067	0
33	Bari, Italy	28,914	993	0
34	Jesi, Italy	40,639	992	0
35	Cagliari, Italy	31,705	959	0
36	Moscow, Russian Federation	2,168	883	0
37	Ascoli Piceno, Italy	34,638	787	0
38	Verona, Italy	21,400	778	0
39	Olbia, Italy	20,969	770	0
40	Saint Petersburg, Russian Federation	961	761	0
41	Beijing, China	3,675	729	0
42	Cussignacco, Italy	29,314	717	0
43	Senigallia, Italy	33,108	707	0
44	Bancali, Italy	28,372	669	0
45	Volpiano, Italy	17,062	667	0
46	Cervia, Italy	53,519	650	0
47	Tivoli, Italy	5,684	645	0
48	San Benedetto Del Tronto, Italy	26,709	645	0
49	Tokyo, Japan	2,278	639	0
50	Pollenza, Italy	28,817	631	0
	Subtotal	4,629,712	155,074	0
	Total	8,576,396	277,792	0

Referrers

Referring Sites

Top Referring Sites

	Site	Visitors
1	No Referrer	385,056
	Total	385,056

Referring URLs

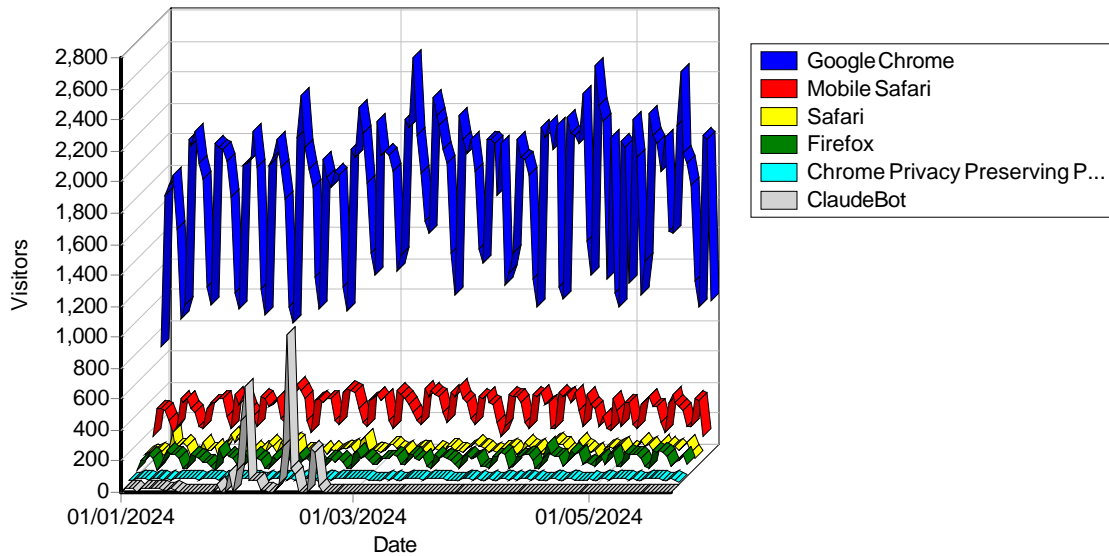
Top Referring URLs

	URL	Visitors
1	No Referrer	385,056
	Total	385,056

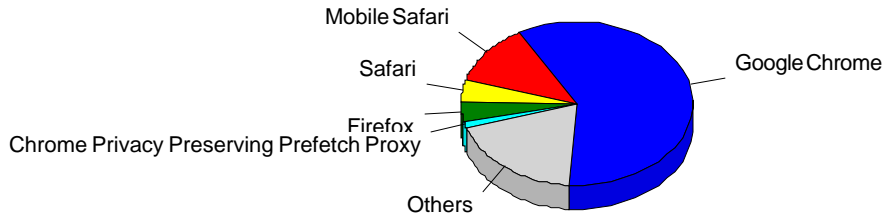
Browsers

Browsers

Daily Used Browsers



Most Used Browsers

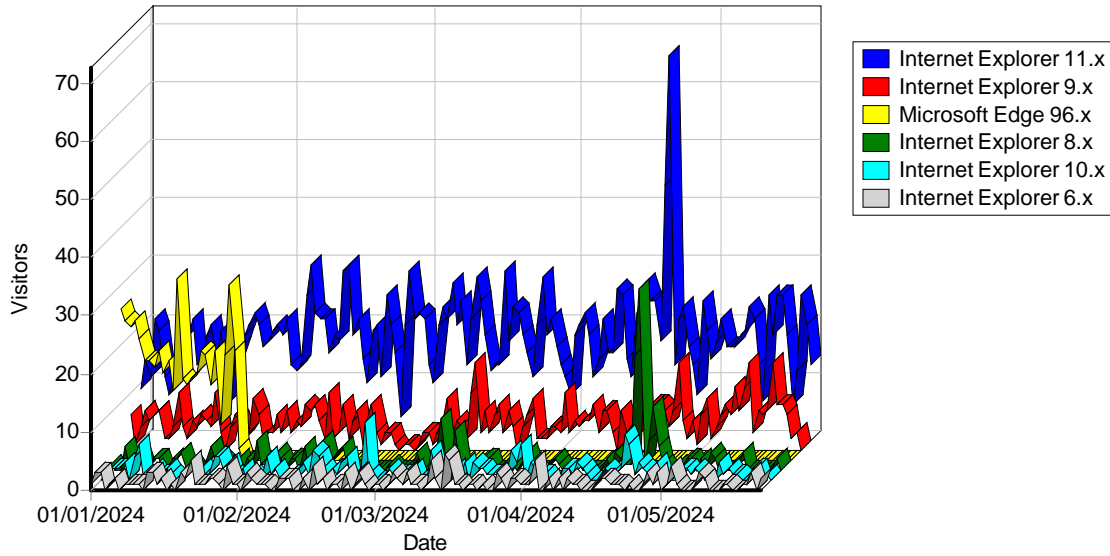


Most Used Browsers

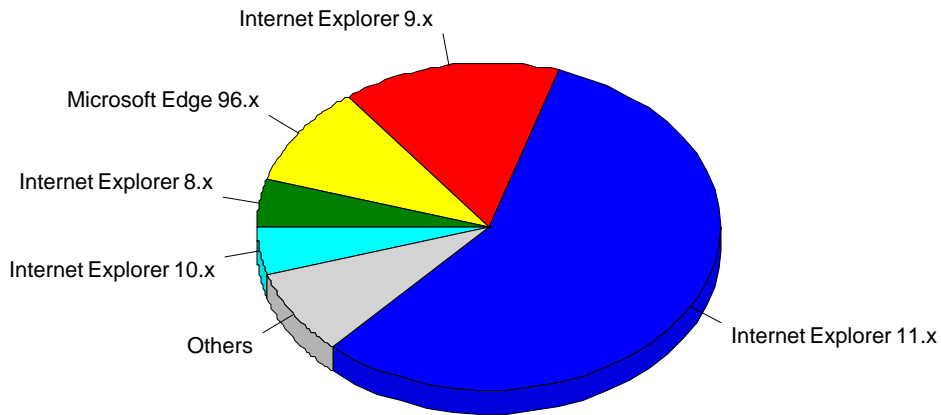
	Browser	Hits	Visitors	% of Total Visitors
1	Google Chrome	8,437,799	242,295	59.47%
2	Mobile Safari	1,180,887	48,487	11.90%
3	Safari	332,695	18,267	4.48%
4	Firefox	601,530	15,398	3.78%
5	Chrome Privacy Preserving Prefetch Proxy	5,382	4,767	1.17%
6	ClaudeBot	14,461	4,267	1.05%
7	Mozilla/5.0 (Macintosh; Intel Mac OS X 10_15_7) AppleWebKit/605.1.15 (KHTML, like Gecko)	11,649	4,092	1.00%
8	Internet Explorer	266,112	4,066	1.00%
9	python-requests/2.24.0	5,494	3,337	0.82%
10	Others	12,500	3,233	0.79%

11	claudebot	1,928	1,743	0.43%
12	Mozilla/5.0 (Linux; Android 7.0;) AppleWebKit/537.36 (KHTML, like Gecko) Mobile Safari/537.36 (compatible; PetalBot; https://webmaster.petalsearch.com/site/petalbot)	2,891	1,587	0.39%
13	LinkOut Icon Download Utility	3,104	1,552	0.38%
14	Microsoft Office/16.0 (Windows NT 10.0; Microsoft Outlook 16.0.5254; Pro)	4,463	1,533	0.38%
15	Android-SAMSUNG-SM-G975F/101.12	2,059	1,325	0.33%
16	AppleExchangeWebServices/833accounts/113	8,282	1,318	0.32%
17	Opera	29,746	1,291	0.32%
18	Mozilla/5.0 AppleWebKit/537.36 (KHTML, like Gecko; compatible; ClaudeBot/1.0; claudebot@anthropic.com)	1,295	1,272	0.31%
19	python-requests/2.31.0	3,272	1,130	0.28%
20	Go-http-client/1.1	2,787	1,099	0.27%
21	Android-SAMSUNG-SM-A202F/101.11	1,319	1,097	0.27%
22	Microsoft Office/16.0 (Windows NT 10.0; Microsoft Outlook 16.0.10406; Pro)	1,589	748	0.18%
23	Expanse, a Palo Alto Networks company, searches across the global IPv4 space multiple times per day to identify customers; presences on the Internet. If you would like to be excluded from our scans, please send IP addresses/domains to: scaninfo@paloaltonetworks.com	713	713	0.18%
24	WhatsApp/2.23.20.0	1,263	660	0.16%
25	Microsoft Edge	2,918	616	0.15%
26	MobileSafari/604.1 CFNetwork/978.0.7 Darwin/18.7.0	7,129	607	0.15%
27	MobileSafari/8618.1.15.10.15 CFNetwork/1494.0.7 Darwin/23.4.0	2,834	602	0.15%
28	MobileSafari/8617.2.4.10.8 CFNetwork/1492.0.1 Darwin/23.3.0	2,653	533	0.13%
29	Mozilla/5.0 (compatible; CensysInspect/1.1; https://about.censys.io/)	1,204	528	0.13%
30	Android Browser	54,765	470	0.12%
31	MobileSafari/8617.1.17.10.9 CFNetwork/1490.0.4 Darwin/23.2.0	2,384	468	0.11%
32	okhttp/4.9.3	544	453	0.11%
33	appaltiscraper (http://www.yourdomain.com)	424	424	0.10%
34	MacOutlook/16.49.21050901 (Intelx64 Mac OS X 10.15.7 (Build 19H2026))	557	410	0.10%
35	Safari/19616.2.9.11.7 CFNetwork/1485 Darwin/23.1.0	1,351	401	0.10%
36	Java/1.6.0_29	562	377	0.09%
37	OutlookMobileCloudService-Autodetect/1.0.0	494	355	0.09%
38	Mozilla/5.0 (compatible; InternetMeasurement/1.0; https://internet-measurement.com/)	403	351	0.09%
39	Android-SAMSUNG-SM-T830/101.10	372	344	0.08%
40	Mozilla/5.0	515	336	0.08%
41	Safari/19617.1.17.11.12 CFNetwork/1490.0.4 Darwin/23.2.0	1,562	328	0.08%
42	Safari/17618.1.15.111.8 CFNetwork/1335.5 Darwin/21.6.0	1,304	324	0.08%
43	Mozilla/5.0 (compatible; PetalBot; https://webmaster.petalsearch.com/site/petalbot)	541	302	0.07%
44	MobileSafari/602.1 CFNetwork/811.5.4 Darwin/16.7.0	3,063	294	0.07%
45	Mozilla/5.0 (compatible; ImagesiftBot; imagesift.com)	645	284	0.07%
46	Apache-HttpClient/4.1.1 (java 1.5)	281	281	0.07%
47	python-requests/2.27.1	868	280	0.07%
48	Safari/19618.1.15.11.14 CFNetwork/1494.0.7 Darwin/23.4.0	1,628	277	0.07%
49	Mozilla/5.0 zgrab/0.x	517	256	0.06%
50	Microsoft Office/16.0 (Windows NT 10.0; Microsoft Outlook 16.0.5404; Pro)	780	254	0.06%
	Subtotal	11,023,518	375,432	92.15%
	Total	11,381,158	407,423	100.00%

Daily Internet Explorer and Microsoft Edge Versions



Internet Explorer and Microsoft Edge Versions



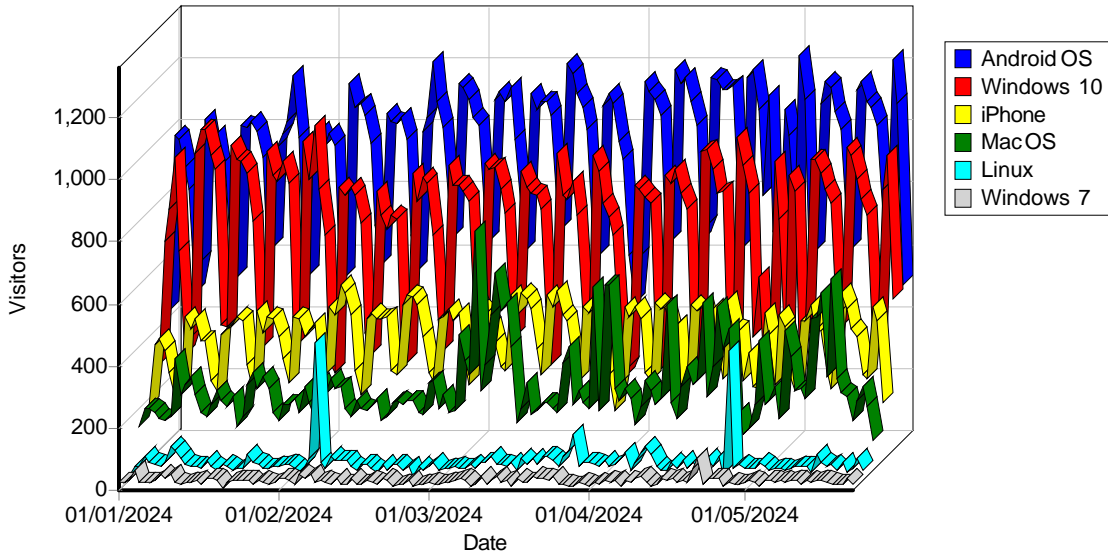
Internet Explorer and Microsoft Edge Versions

	Browser	Hits	Visitors	% of Total Visitors
1	Internet Explorer 11.x	259,562	2,646	56.84%
2	Internet Explorer 9.x	3,451	708	15.21%
3	Microsoft Edge 96.x	467	462	9.92%
4	Internet Explorer 8.x	726	223	4.79%
5	Internet Explorer 10.x	2,423	223	4.79%
6	Internet Explorer 6.x	335	182	3.91%
7	Internet Explorer 7.x	145	63	1.35%
8	Microsoft Edge 18.x	913	50	1.07%
9	Microsoft Edge 12.x	367	33	0.71%
10	Internet Explorer 5.x	14	14	0.30%
11	Microsoft Edge 16.x	176	10	0.21%
12	Microsoft Edge 44.x	19	10	0.21%

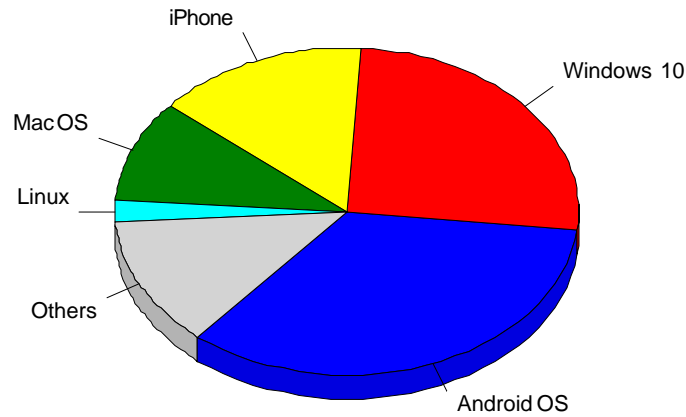
13	Microsoft Edge 13.x	34	9	0.19%
14	Microsoft Edge 17.x	217	8	0.17%
15	Microsoft Edge 14.x	25	6	0.13%
16	Microsoft Edge 15.x	152	5	0.11%
17	Internet Explorer 4.x	1	1	0.02%
18	Microsoft Edge 77.x	2	1	0.02%
19	Microsoft Edge 58.x	1	1	0.02%
Total		269,030	4,655	100.00%

Operating Systems

Daily Used Operating Systems



Most Used Operating Systems



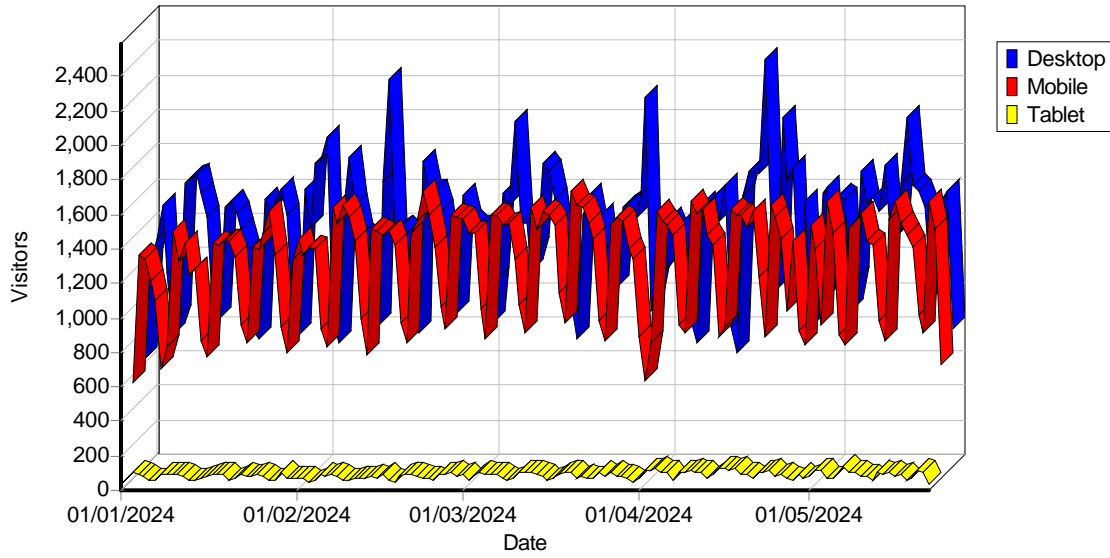
Most Used Operating Systems

	Operating System	Hits	Visitors	% of Total Visitors
1	Android OS	3,795,853	132,193	34.33%
2	Windows 10	4,777,257	99,359	25.80%

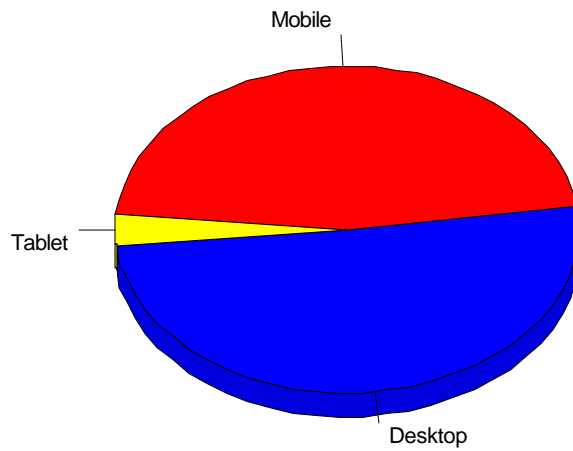
3	iPhone	1,461,170	56,804	14.75%
4	Others	265,034	39,568	10.28%
5	Mac OS	596,624	38,976	10.12%
6	Linux	285,990	8,087	2.10%
7	Windows 7	87,701	4,118	1.07%
8	iPad	31,364	1,716	0.45%
9	Windows XP	9,251	1,472	0.38%
10	Chrome OS	12,116	1,276	0.33%
11	Windows 8	41,984	510	0.13%
12	Windows 8.1	13,420	495	0.13%
13	Windows NT	948	284	0.07%
14	Windows Vista	1,663	95	0.02%
15	Windows 2000	181	40	0.01%
16	Windows Server 2003	479	22	0.01%
17	OpenBSD	41	11	0.00%
18	FreeBSD	14	5	0.00%
19	Windows 98	16	4	0.00%
20	Windows CE	5	4	0.00%
21	BlackBerry	7	4	0.00%
22	OS/2	14	2	0.00%
23	Windows Phone	6	2	0.00%
24	webOS	3	1	0.00%
25	iPod	2	1	0.00%
26	BeOS	1	1	0.00%
27	Windows 3.x	1	1	0.00%
28	Sun OS	4	1	0.00%
29	Wii	3	1	0.00%
30	PlayStation 3	1	1	0.00%
31	Windows ME	2	1	0.00%
32	PlayBook	2	1	0.00%
33	IRIX	1	0	0.00%
	Total	11,381,158	385,056	100.00%

Device Types

Daily Device Types



Device Types

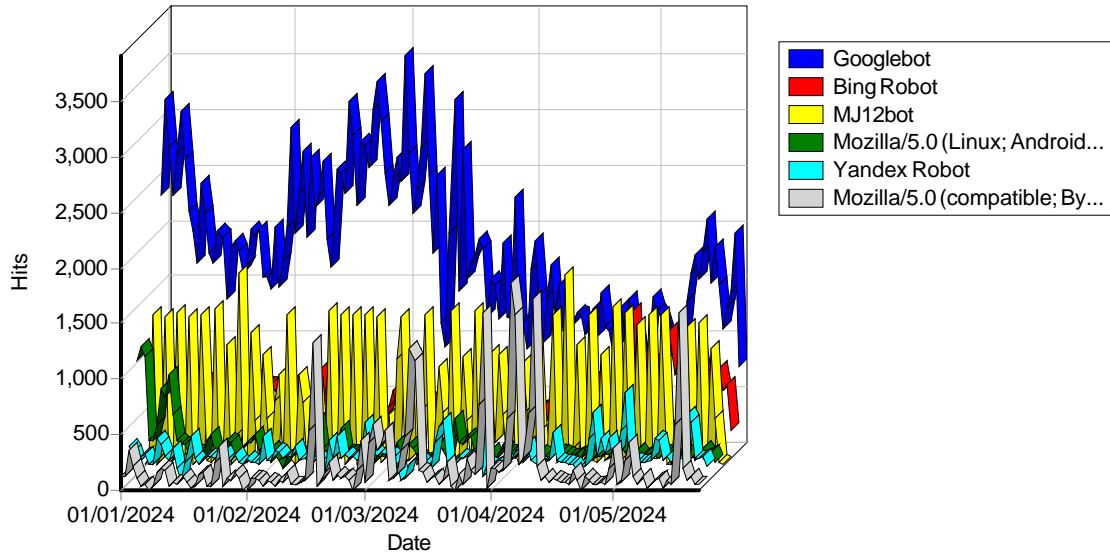


Device Types

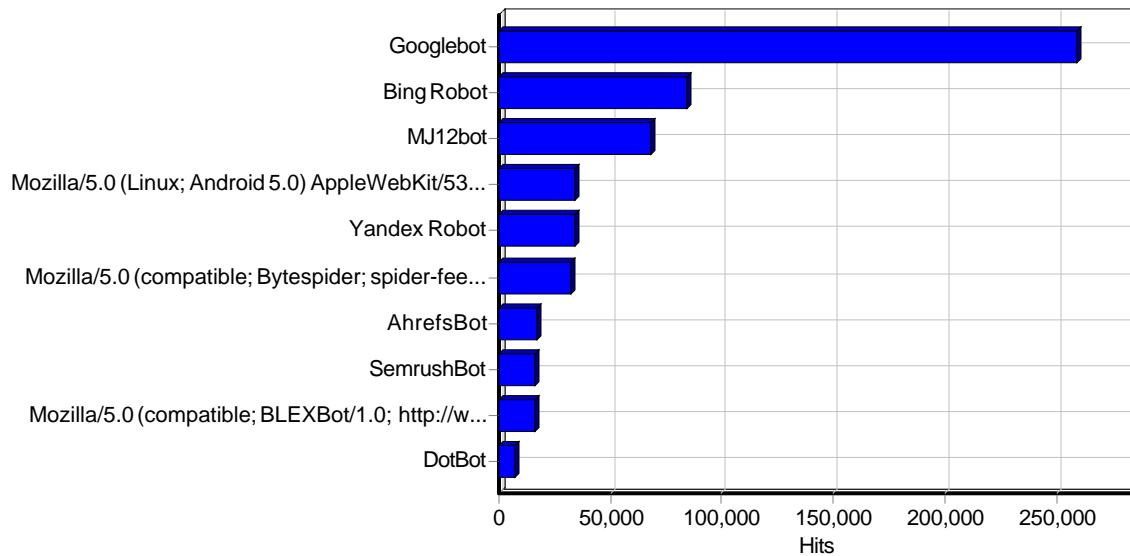
	Device Type	Hits	Visitors	% of Total Visitors
1	Desktop	6,092,714	194,326	50.47%
2	Mobile	5,170,819	178,672	46.40%
3	Tablet	117,625	12,058	3.13%
	Total	11,381,158	385,056	100.00%

Spiders

Daily Spider Activity



Top Spiders



Top Spiders

	Spider	Hits
1	Googlebot	259,276
2	Bing Robot	84,519
3	MJ12bot	68,205
4	Mozilla/5.0 (Linux; Android 5.0) AppleWebKit/537.36 (KHTML, like Gecko) Mobile Safari/537.36 (compatible; Bytespider; spider-feedback@bytedance.com)	34,400
5	Yandex Robot	34,353
6	Mozilla/5.0 (compatible; Bytespider; spider-feedback@bytedance.com) AppleWebKit/537.36 (KHTML, like Gecko) Chrome/70.0.0.0 Safari/537.36	32,716
7	AhrefsBot	17,061
8	SemrushBot	16,557
9	Mozilla/5.0 (compatible; BLEXBot/1.0; http://webmeup-crawler.com/)	16,224
10	DotBot	7,393
11	FaceBook Crawler	7,026

12	Sogou Spider	5,241
13	magpie-crawler/1.1 (robots-txt-checker; http://www.brandwatch.net)	4,827
14	magpie-crawler/1.1 (U; Linux amd64; en-GB; http://www.brandwatch.net)	3,218
15	Baidu Spider	2,541
16	Google Preview Robot	1,784
17	Mozilla/5.0 (compatible; Barkrowler/0.9; https://babbar.tech/crawler)	1,502
18	Mozilla/5.0 (Windows NT 10.0; Win64; x64) AppleWebKit/605.1.15 (KHTML, like Gecko; compatible; FriendlyCrawler/1.0) Chrome/120.0.6099.216 Safari/605.1.15	719
19	StormCrawler 1.18/1.0 (https://github.com/DigitalPebble/storm-crawler)	688
20	SeznamBot	608
21	crawler_eb_germany_2.0	593
22	Mozilla/5.0 (iPhone; CPU iPhone OS 10_3 like Mac OS X) AppleWebKit/602.1.50 (KHTML, like Gecko) CriOS/56.0.2924.75 Mobile/14E5239e YisouSpider/5.0 Safari/602.1	541
23	Google AdWords Robot	533
24	IonCrawl (https://www.ionos.de/terms-gtc/faq-crawler-en/)	520
25	Mozilla/5.0 (compatible) SemanticScholarBot (https://www.semanticscholar.org/crawler)	487
26	covid19crawler (crawler@tkl.iis.u-tokyo.ac.jp)	394
27	Archive.org Robot	376
28	FriendlyCrawler/Nutch-1.20-SNAPSHOT	369
29	Mozilla/5.0 (compatible; VelenPublicWebCrawler/1.0; https://velen.io)	345
30	Mozilla/5.0 (compatible; Linux x86_64; Mail.RU_Bot/2.0; https://help.mail.ru/webmaster/indexing/robots)	296
31	Mozilla/5.0 (Windows NT 6.1; Win64; x64) AppleWebKit/537.36 (KHTML, like Gecko) Chrome/69.0.3497.81 YisouSpider/5.0 Safari/537.36	232
32	YisouSpider	231
33	netEstate NE Crawler (http://www.website-datenbank.de/)	215
34	Mozilla/5.0 (compatible; ev-crawler/1.0; https://headline.com/legal/crawler)	180
35	DnBCrawler-Analytics	146
36	Mozilla/5.0 (Windows NT 6.1; WOW64) AppleWebKit/537.36 (KHTML, like Gecko) Chrome/50.0.2661.102 Safari/537.36; 360Spider	136
37	WebLog Expert	129
38	Mozilla/5.0 (compatible; SEOkicks; https://www.seokicks.de/robot.html)	125
39	Mozilla/5.0 (Windows NT 10.0; Win64; x64) AppleWebKit/605.1.16 (KHTML, like Gecko; compatible; Friendly_Crawler/2.0) Chrome/120.0.6099.217 Safari/605.1.15/Nutch-1.20-SNAPSHOT	115
40	Mozilla/5.0 (compatible; Linux x86_64; Mail.RU_Bot/Favicons/2.0; https://help.mail.ru/webmaster/indexing/robots)	109
41	FeedFury Robot	99
42	WikiDo/1.1 (http://wikido.com ; crawler@wikido.com)	87
43	Twitterbot	57
44	'Mozilla/5.0 (compatible; GenomeCrawler/1.0; https://www.nokia.com/networks/ip-networks/deepfield/genome/)'	46
45	LinkdexBot	45
46	PDF Drive Crawler 1.05 (https://www.pdfdrive.com/)	44
47	Netcraft Spider	42
48	BrightEdge Crawler/1.0 (crawler@brightedge.com)	39
49	Screaming Frog SEO Spider/19.8	38
50	Mozilla/5.0 (compatible; proximic; https://www.comscore.com/Web-Crawler)	35
	Subtotal	605,462
	Total	605,821